

Pyramid Hill College (1712)

2006 School Level Report

Please check the data in this report. If, after comparing it with your own records, you deem it to be incorrect or incomplete, follow the directions on the web page below:

- <http://www.sofweb.vic.edu.au/standards>, then click on '**Accountability and Improvement**', then click on '**School Performance Reports**'.
-
-

Contents

	Page No.
Confidentiality	3
'Like' School Group chart	4
Assessment of Reading Prep to Year 2	5-6
Teacher Assessments against the VELs/CSF	7-24
AIM Reading	25-26
AIM Mathematics	27-28
VCE Results	29-30
VCE study scores of 40 or more	31
VET	32
VCAL	33
Teacher Assessment of Student Progress (PSD students)	34-35
Enrolments	36
Apparent Retention	37
Real Retention	38
Exit Destination	39-42
Student Absence	43
Parent Opinion	44
Staff Opinion	45
Staff Sick Leave	46
Teaching Staff Retention	47
Bank Balances	48

Confidentiality

When reporting on the school's performance to the school community, care must be taken to avoid the disclosure of information that can directly or indirectly identify an individual. This may be a particular issue when reporting on the achievement of specific cohorts of students or the opinions of staff where there are small numbers.

In situations where confidentiality cannot be assured, schools may wish to report on the mean result or provide a written comment on school, year level or cohort performance.

Where the School Level Report is provided to school council members as part of any annual reporting process, or used for discussion on a school's performance, such as in consultation with the school community in the school self-evaluation process, it is important to remind school community members of their duty to only use this information for the purpose it was provided, and that the material must be kept confidential.

It is important to note that information that identifies an individual or can be used with other readily available information to identify a person is now protected by the *Information Privacy Act 2000* (<http://www.education.vic.gov.au/about/deptpolicies/informationprivacy.htm>).

'Like' School Group

School no: 1712

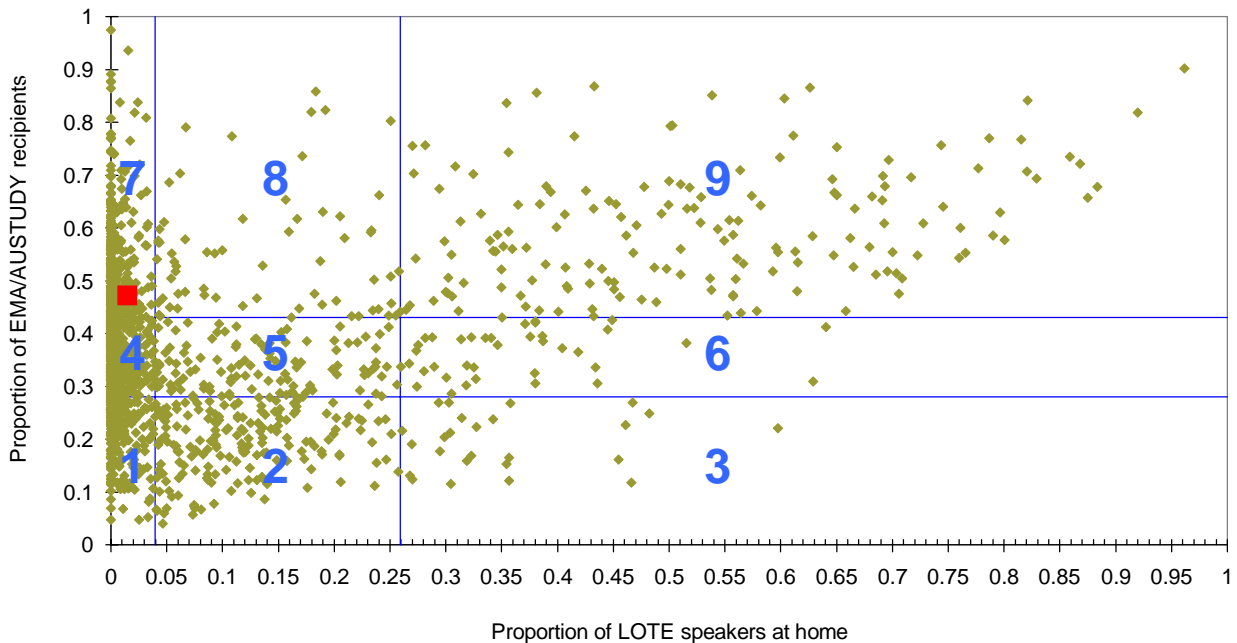
School name: Pyramid Hill College

Explanation: The first chart below plots the Like School Group position of all government schools offering Prep - Year 10. The second chart plots the Like School Group position of all government schools providing VCE. This school is shown as the red square on the relevant chart/s.

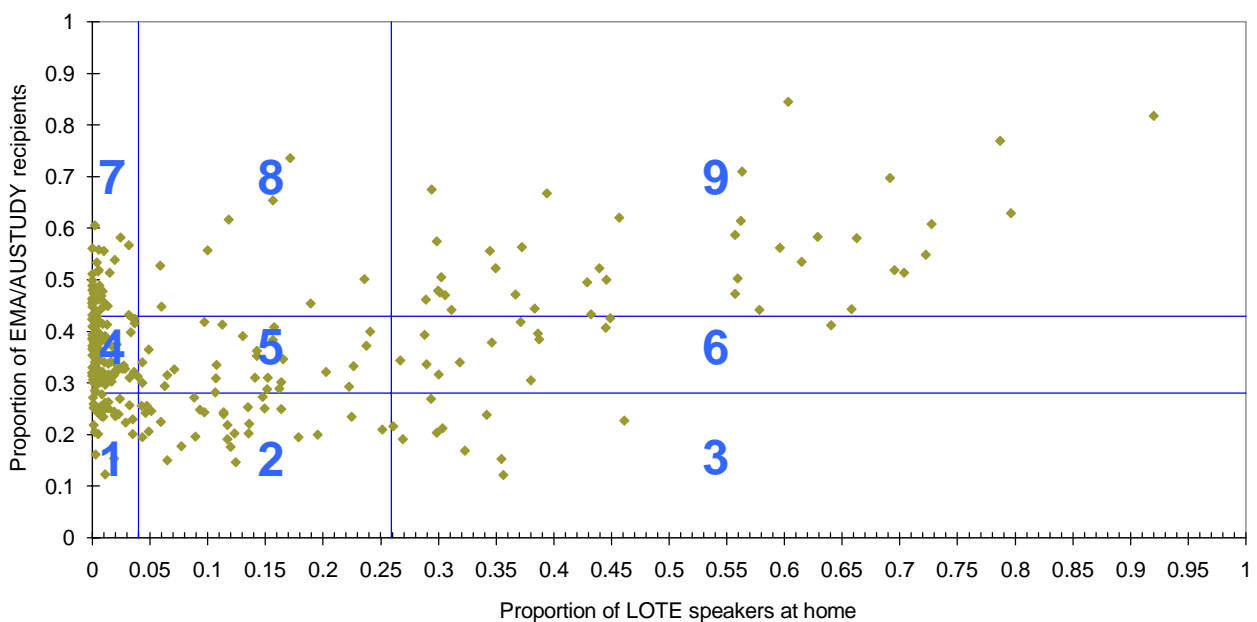
Note: EMA/AUSTUDY and LOTE proportions were not collected from 2004. 2003 proportions, and resulting LSGs, are therefore used from 2004.

	1999	2000	2001	2002	2003	2004	2005	2006
LSG:	7	7	7	7	7	7	7	7
EMA (3 year average):		0.447	0.436	0.434	0.471	0.471	0.471	0.471
LOTE (3 year average):			0.008	0.015	0.015	0.015	0.015	0.015

Like School Groups 2006, school plotted against Prep - Year 10 schools



Like School Groups 2006, school plotted against VCE providers



Assessment of Reading: Prep to Year 2

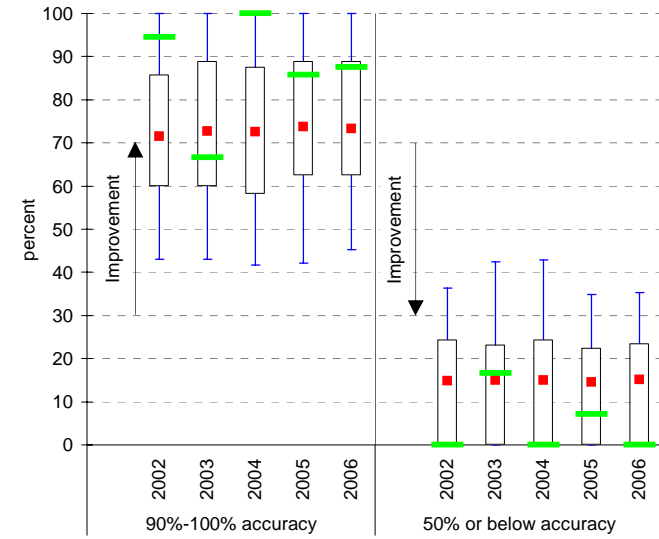
School no: 1712

School name: Pyramid Hill College

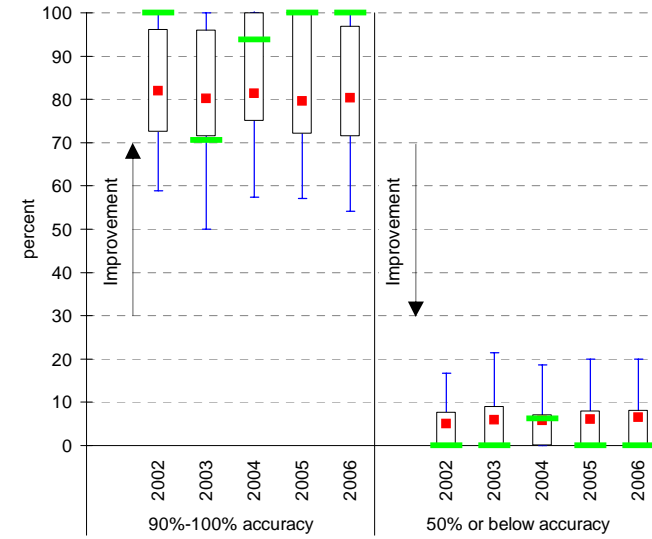
Explanation: Students' ability to read unsighted text is assessed at the end of each year.

Source of data: Data transmitted from school to DoE via an online web-form.

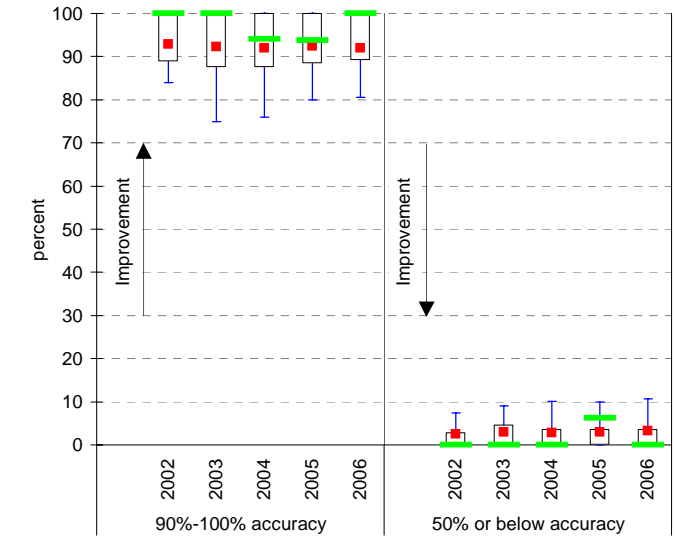
Year level: Prep
Text level: Level 5



Year level: Year 1
Text level: Level 15



Year level: Year 2
Text level: Level 20



Legend:

- LSG 90th percentile
- LSG 75th percentile
- LSG Mean
- LSG 25th percentile
- School
- LSG 10th percentile

LSG History

2002	7
2003	7
2004	7
2005	7
2006	7

Teacher Assessments against the VELS - Year levels Prep-6 combined

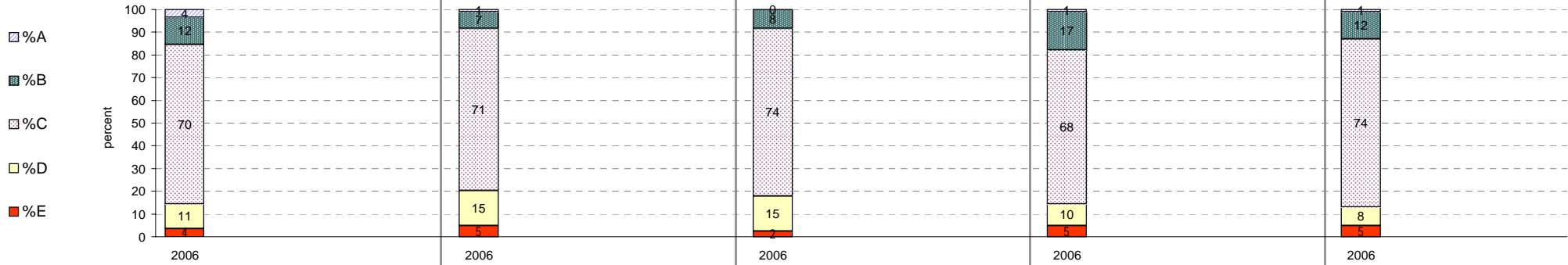
School no: 1712

School name: Pyramid Hill College

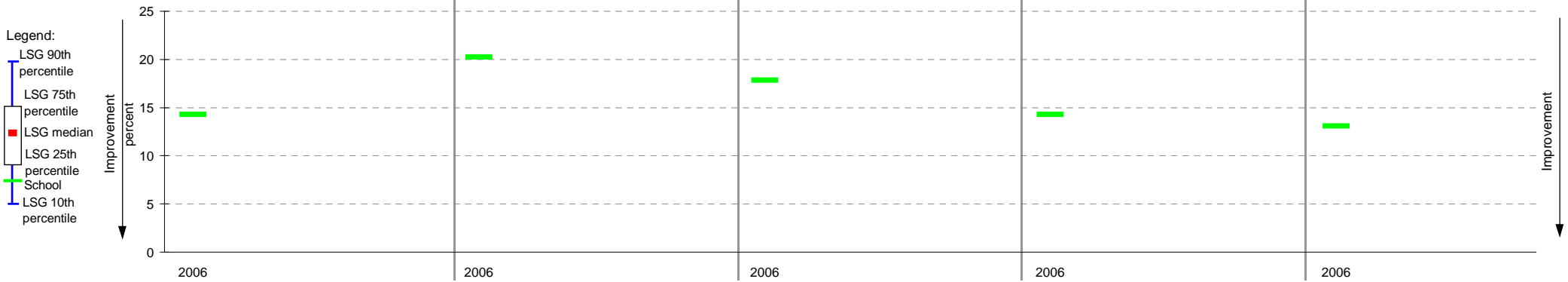
Source of data: Data retrieved electronically from CASES21 at time of rollover.

Explanation: Teacher assessments of student progress against the VELS.

	Reading						Writing						Speaking & Listening						Number						Measurement, Chance & Data*						
	total students	% A	% B	% C	% D	% E	total students	% A	% B	% C	% D	% E	total students	% A	% B	% C	% D	% E	total students	% A	% B	% C	% D	% E	total students	% A	% B	% C	% D	% E	
Year Levels: Prep-6 (combined)	2006	84	4	12	70	11	4	84	1	7	71	15	5	84	0	8	74	15	2	84	1	17	68	10	5	84	1	12	74	8	5



Percentage achieving D or E, compared to LSG benchmarks**



Notes:

* pre-2006, the corresponding CSF strand for VELS Measurement, Chance and Data was Measurement.

** 2006 benchmarks will not be available until June 2007.

Teacher Assessments against the VELS - English (primary)

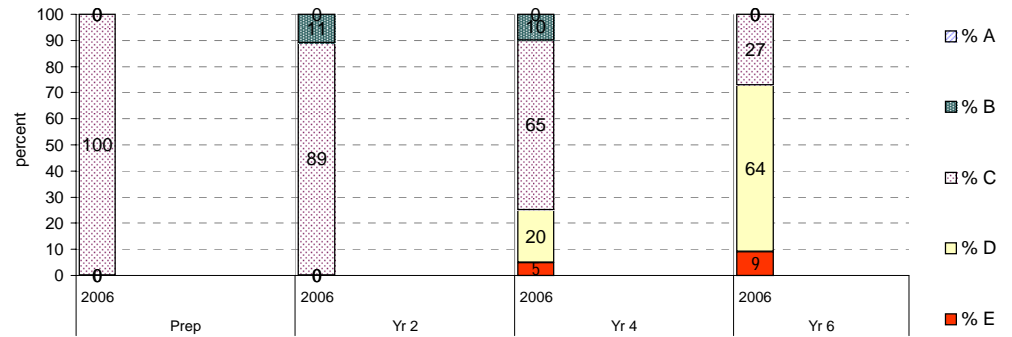
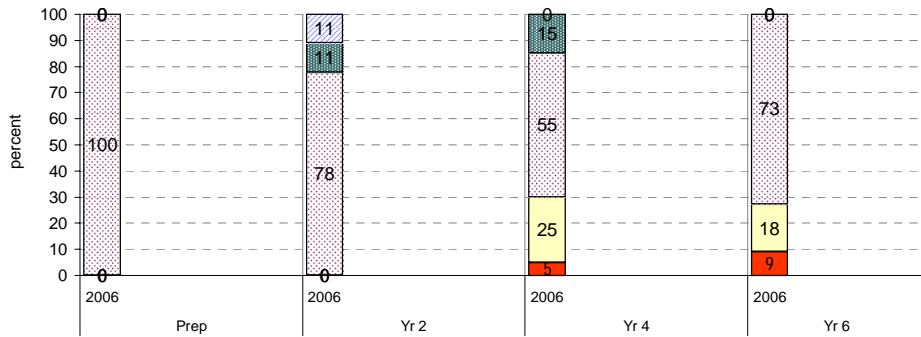
School no: 1712
School name: Pyramid Hill College
Source of data: Data retrieved electronically from CASES21 at time of rollover.
Explanation: Teacher assessments of student progress against the VELS.

Reading

		total students	% A	% B	% C	% D	% E	mean	Benchmarks* (means)	
									LSG	State
Prep	2006	8	0	0	100	0	0	0.88		
Yr 2	2006	9	11	11	78	0	0	2.00		
Yr 4	2006	20	0	15	55	25	5	2.85		
Yr 6	2006	11	0	0	73	18	9	3.66		

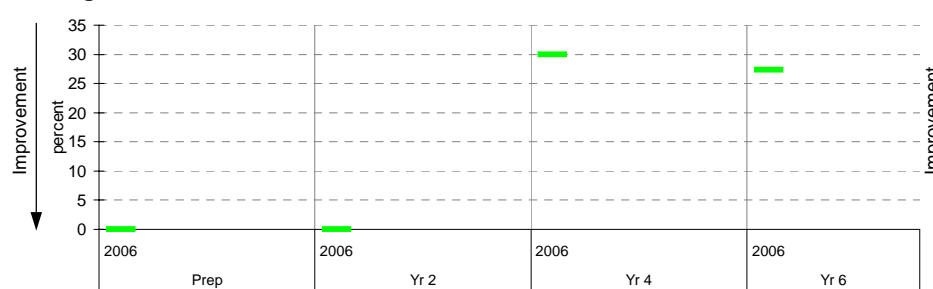
Writing

		total students	% A	% B	% C	% D	% E	mean	Benchmarks* (means)	
									LSG	State
Prep	2006	8	0	0	100	0	0	0.81		
Yr 2	2006	9	0	11	89	0	0	1.92		
Yr 4	2006	20	0	10	65	20	5	2.84		
Yr 6	2006	11	0	0	27	64	9	3.48		

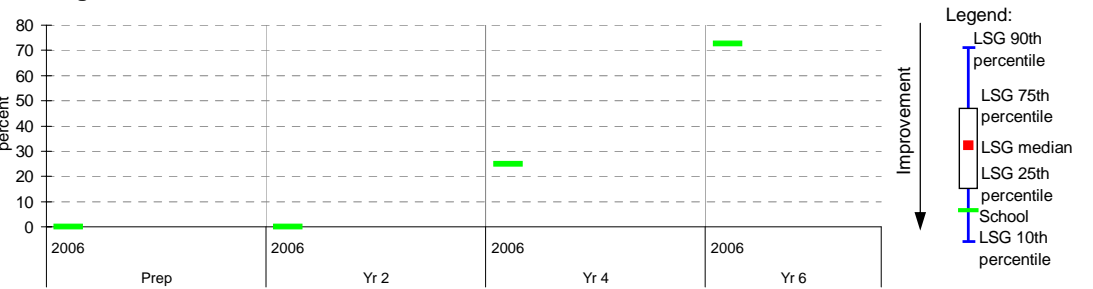


Percentage achieving D or E, compared to LSG benchmarks*

Reading



Writing



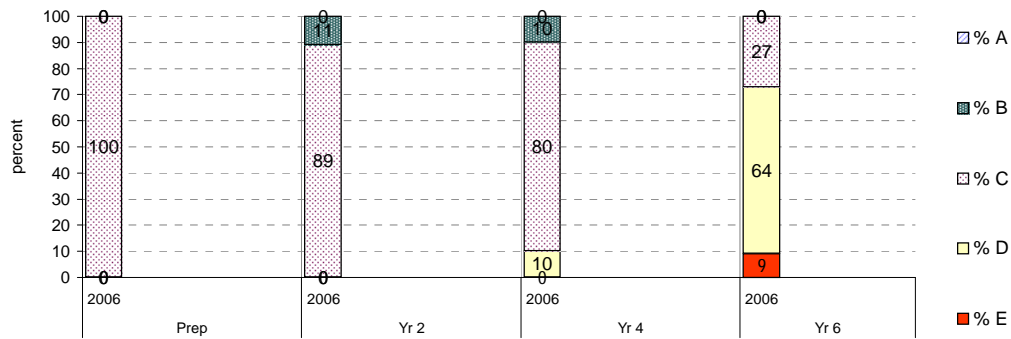
* Note: 2006 benchmarks will not be available until June 2007.

Teacher Assessments against the VELS - English (primary)

School no: 1712
School name: Pyramid Hill College
Source of data: Data retrieved electronically from CASES21 at time of rollover.
Explanation: Teacher assessments of student progress against the VELS.

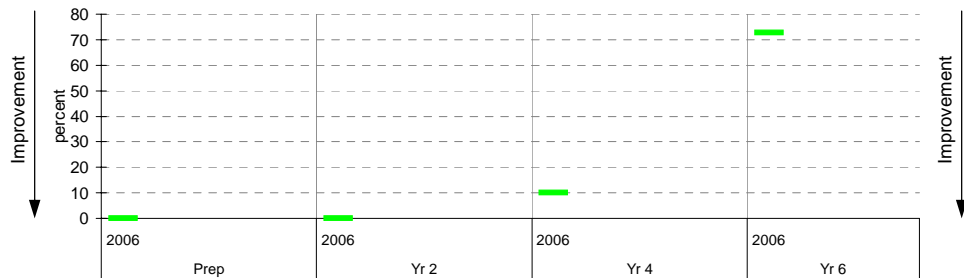
Speaking and Listening

		total students	% A	% B	% C	% D	% E	mean	Benchmarks* (means)	
									LSG	State
Prep	2006	8	0	0	100	0	0	0.88		
Yr 2	2006	9	0	11	89	0	0	2.00		
Yr 4	2006	20	0	10	80	10	0	2.94		
Yr 6	2006	11	0	0	27	64	9	3.52		



Percentage achieving D or E, compared to LSG benchmarks*

Speaking and Listening



Legend:
 LSG 90th percentile
 LSG 75th percentile
 LSG median
 LSG 25th percentile
 School
 LSG 10th percentile

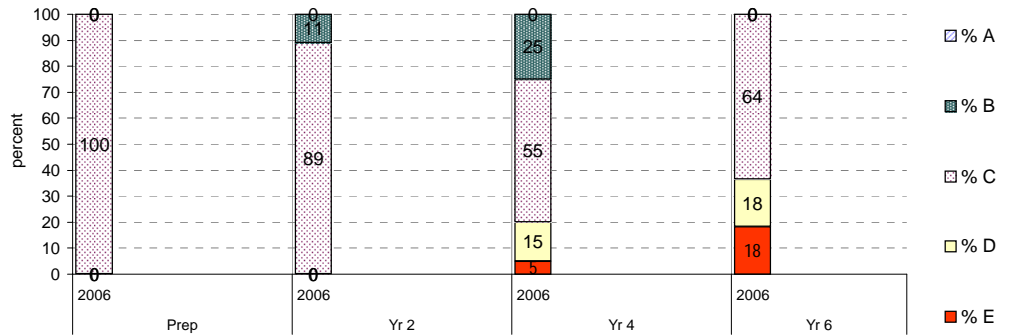
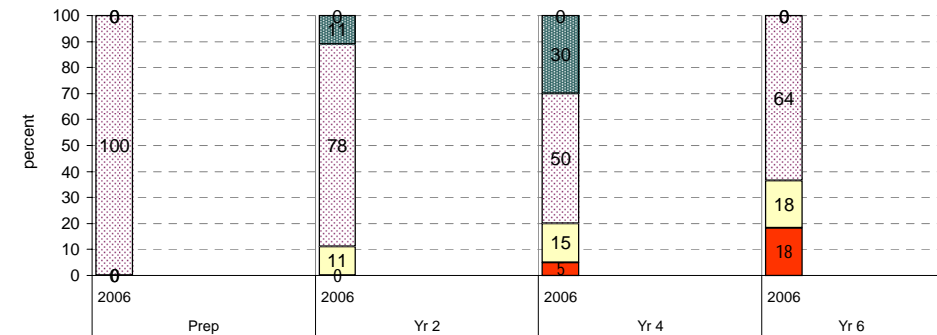
* Note: 2006 benchmarks will not be available until June 2007.

Teacher Assessments against the VELS - Mathematics (primary)

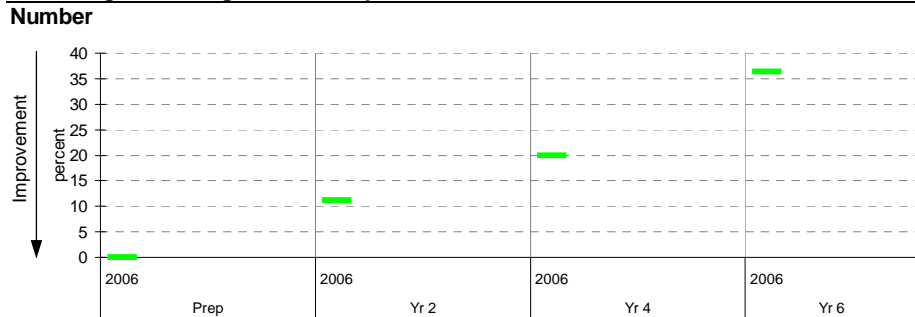
School no: 1712
School name: Pyramid Hill College
Source of data: Data retrieved electronically from CASES21 at time of rollover.
Explanation: Teacher assessments of student progress against the VELS.

Number		total students	% A	% B	% C	% D	% E	mean	Benchmarks* (means)	
									LSG	State
Prep	2006	8	0	0	100	0	0	1.00		
Yr 2	2006	9	0	11	78	11	0	1.92		
Yr 4	2006	20	0	30	50	15	5	2.91		
Yr 6	2006	11	0	0	64	18	18	3.59		

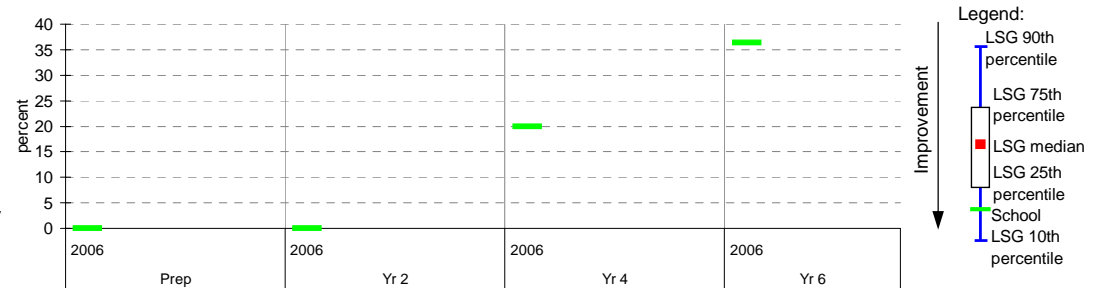
Measurement, Chance and Data (pre-2006, the corresponding CSF strand was Measurement)										
Number		total students	% A	% B	% C	% D	% E	mean	Benchmarks* (means)	
									LSG	State
Prep	2006	8	0	0	100	0	0	1.00		
Yr 2	2006	9	0	11	89	0	0	1.97		
Yr 4	2006	20	0	25	55	15	5	2.89		
Yr 6	2006	11	0	0	64	18	18	3.57		



Percentage achieving D or E, compared to LSG benchmarks*



Measurement, Chance and Data (pre-2006, the corresponding CSF strand was Measurement)



* Note: 2006 benchmarks will not be available until June 2007.

Teacher Assessments against the VELS - English (primary)

School no: 1712	LSG History
School name: Pyramid Hill College	2003 7
Source of data: Data retrieved electronically from CASES21 at time of rollover.	2004 7
Explanation: Teacher assessments of student progress against the VELS.	2005 7
	2006 7

Reading

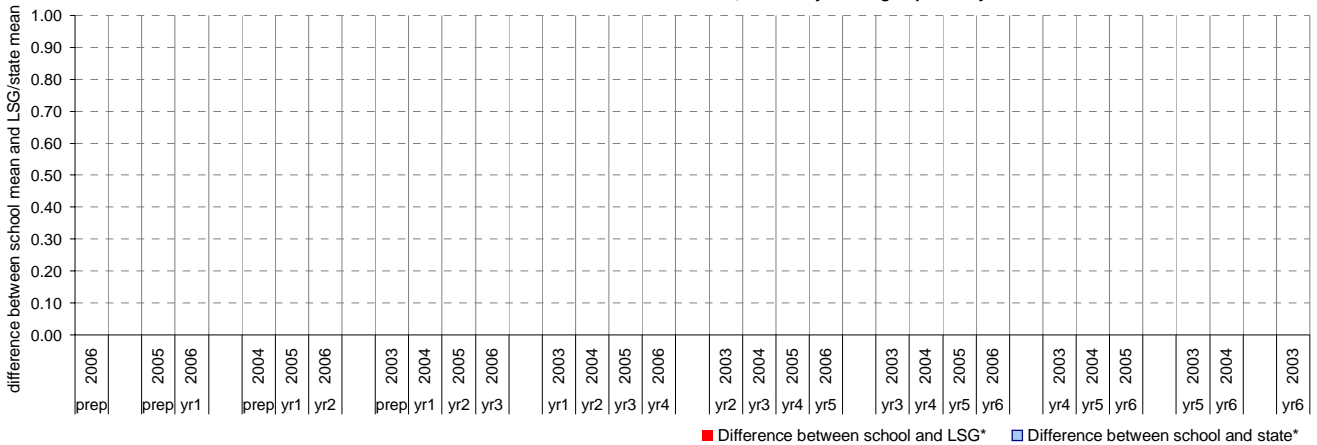
Year Level	Year	Total (1)	Assessed (2)	Level 1			Level 2			Level 3			Level 4			Level 5			Level 6			Level 6E			School mean	Benchmark* means		Diff. between school and ...	
				0.00	0.50	1.00	1.25	1.50	1.75	2.00	2.25	2.50	2.75	3.00	3.25	3.50	3.75	4.00	4.25	4.50	4.75	5.00	5.25	5.50		5.75	6.00	6.25	6.50
prep	2006	8	8	2	6																			0.88					
prep	2005																												
yr1	2006	12	12			8	2	1		1															1.67				
prep	2004																												
yr1	2005																												
yr2	2006	9	9				4	3		1		1													2.00				
prep	2003																												
yr1	2004																												
yr2	2005																												
yr3	2006	16	16	1				2		2	8	1	1	1											2.41				
yr1	2003																												
yr2	2004																												
yr3	2005																												
yr4	2006	20	20			1				5	2	9	1	2											2.85				
yr2	2003																												
yr3	2004																												
yr4	2005																												
yr5	2006	8	8										5	2	1										3.38				
yr3	2003																												
yr4	2004																												
yr5	2005																												
yr6	2006	11	11									1		2	7	1									3.66				
yr4	2003																												
yr5	2004																												
yr6	2005																												
yr5	2003																												
yr6	2004																												
yr6	2003																												

shading indicates a 'C' grade (at the expected standard) on the VELS scale.

- (1) Students in group
- (2) Total assessed

* Note: 2006 benchmarks will not be available until June 2007.

Difference between school mean and LSG* and state* means, ordered by cohort group over 4 years



Teacher Assessments against the VELS - English (primary)

School no: 1712	LSG History
School name: Pyramid Hill College	2003 7
Source of data: Data retrieved electronically from CASES21 at time of rollover.	2004 7
Explanation: Teacher assessments of student progress against the VELS.	2005 7
	2006 7

Writing

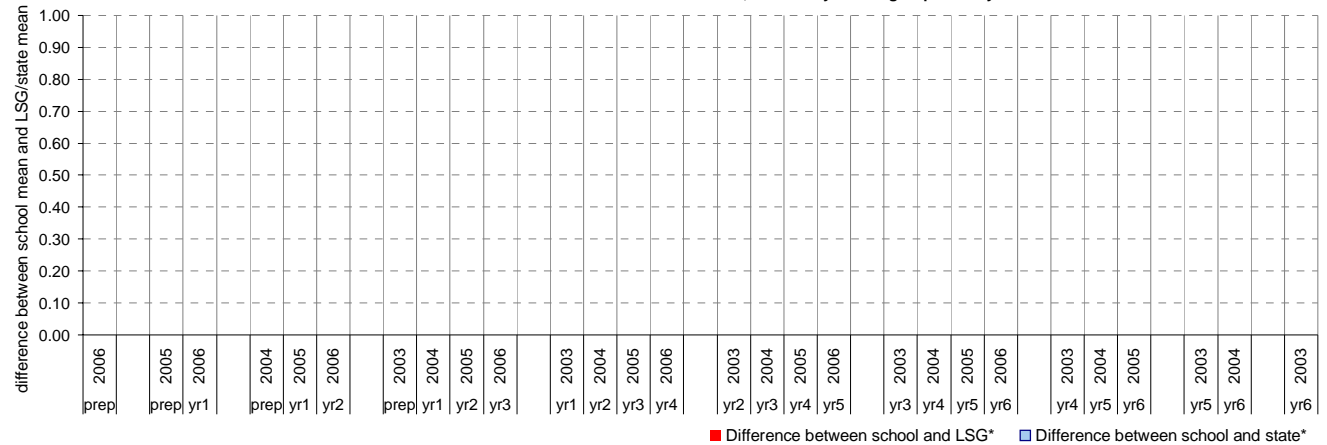
Year Level	Year	Total (1)	Assessed (2)	Level 1			Level 2			Level 3			Level 4			Level 5			Level 6			Level 6E			School mean	Benchmark* means		Diff. between school and ...	
				0.00	0.50	1.00	1.25	1.50	1.75	2.00	2.25	2.50	2.75	3.00	3.25	3.50	3.75	4.00	4.25	4.50	4.75	5.00	5.25	5.50		5.75	6.00	6.25	6.50
prep	2006	8	8	3	5																			0.81					
prep	2005																												
yr1	2006	12	12			10	1	1																	1.56				
prep	2004																												
yr1	2005																												
yr2	2006	9	9				4	4	1																1.92				
prep	2003																												
yr1	2004																												
yr2	2005																												
yr3	2006	16	16	1	1	2	3	8	1																2.28				
yr1	2003																												
yr2	2004																												
yr3	2005																												
yr4	2006	20	20		1		4	3	10	1	1														2.84				
yr2	2003																												
yr3	2004																												
yr4	2005																												
yr5	2006	8	8									5	2	1											3.38				
yr3	2003																												
yr4	2004																												
yr5	2005																												
yr6	2006	11	11							1	3	4	2	1											3.48				
yr4	2003																												
yr5	2004																												
yr6	2005																												
yr5	2003																												
yr6	2004																												
yr6	2003																												

shading indicates a 'C' grade (at the expected standard) on the VELS scale.

- (1) Students in group
- (2) Total assessed

* Note: 2006 benchmarks will not be available until June 2007.

Difference between school mean and LSG* and state* means, ordered by cohort group over 4 years



Teacher Assessments against the VELS - English (primary)

School no:	1712	LSG History
School name:	Pyramid Hill College	2003 7
Source of data:	Data retrieved electronically from CASES21 at time of rollover.	2004 7
Explanation:	Teacher assessments of student progress against the VELS.	2005 7
		2006 7

Speaking and Listening

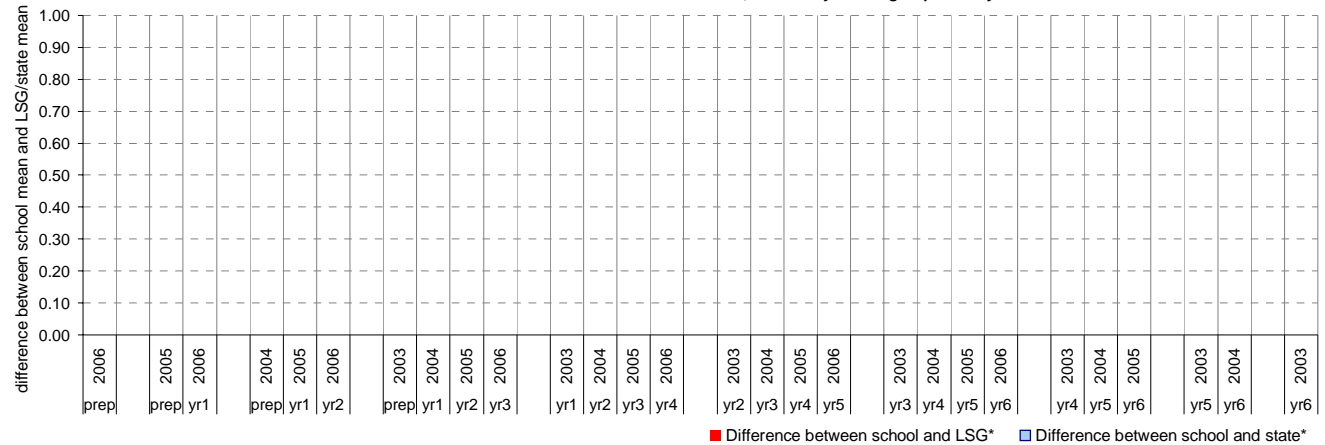
Year Level	Year	Total (1)	Assessed (2)	Level 1			Level 2			Level 3			Level 4			Level 5			Level 6			Level 6E			School mean	Benchmark* means		Diff. between school and ...	
				0.00	0.50	1.00	1.25	1.50	1.75	2.00	2.25	2.50	2.75	3.00	3.25	3.50	3.75	4.00	4.25	4.50	4.75	5.00	5.25	5.50		5.75	6.00	6.25	6.50
prep	2006	8	8	2	6																			0.88					
prep	2005																												
yr1	2006	12	12			11	1																		1.54				
prep	2004																												
yr1	2005																												
yr2	2006	9	9			2	6	1																	2.00				
prep	2003																												
yr1	2004																												
yr2	2005																												
yr3	2006	16	16			1	4	3	6	2															2.30				
yr1	2003																												
yr2	2004																												
yr3	2005																												
yr4	2006	20	20					2	3	13	2														2.94				
yr2	2003																												
yr3	2004																												
yr4	2005																												
yr5	2006	8	8									5	2	1											3.38				
yr3	2003																												
yr4	2004																												
yr5	2005																												
yr6	2006	11	11					1	1	6	2	1													3.52				
yr4	2003																												
yr5	2004																												
yr6	2005																												
yr5	2003																												
yr6	2004																												
yr6	2003																												

shading indicates a 'C' grade (at the expected standard) on the VELS scale.

- (1) Students in group
- (2) Total assessed

* Note: 2006 benchmarks will not be available until June 2007.

Difference between school mean and LSG* and state* means, ordered by cohort group over 4 years



Teacher Assessments against the VELS - Mathematics (primary)

School no: 1712	LSG History
School name: Pyramid Hill College	2003 7
Source of data: Data retrieved electronically from CASES21 at time of rollover.	2004 7
Explanation: Teacher assessments of student progress against the VELS.	2005 7
	2006 7

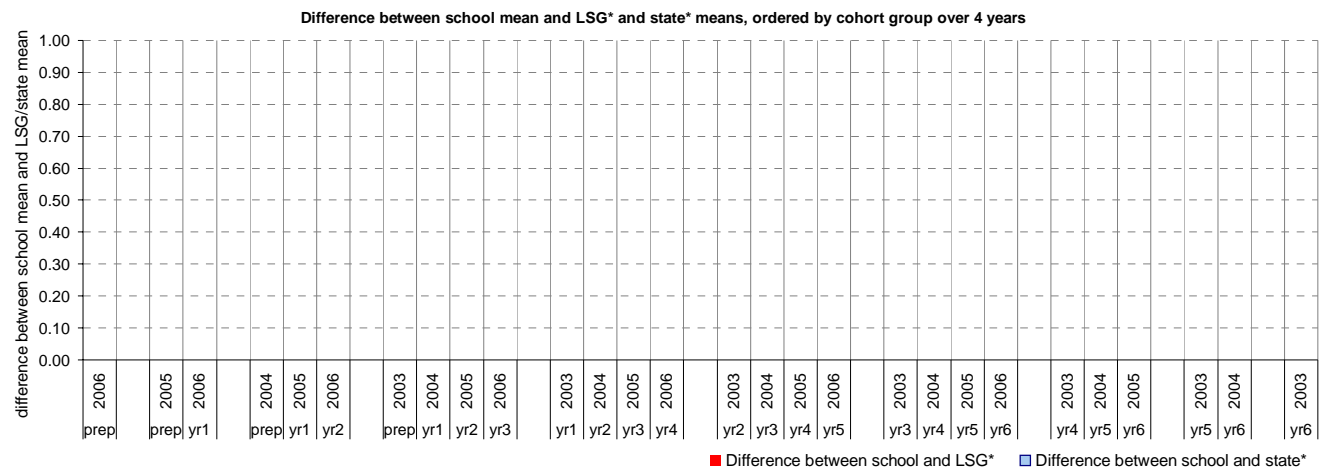
Number

Year Level	Year	Total (1)	Assessed (2)	Level 1			Level 2				Level 3				Level 4				Level 5				Level 6				Level 6E			School mean	Benchmark* means		Diff. between school and ...					
				0.00	0.50	1.00	1.25	1.50	1.75	2.00	2.25	2.50	2.75	3.00	3.25	3.50	3.75	4.00	4.25	4.50	4.75	5.00	5.25	5.50	5.75	6.00	6.25	6.50	6.75		LSG	State	LSG	State				
prep	2006	8	8	8																													1.00					
prep	2005																																					
yr1	2006	12	12		10			2																										1.54				
prep	2004																																					
yr1	2005																																					
yr2	2006	9	9			1	2	5	1																									1.92				
prep	2003																																					
yr1	2004																																					
yr2	2005																																					
yr3	2006	16	16	1		1	1	4	6	2	1																							2.34				
yr1	2003																																					
yr2	2004																																					
yr3	2005																																					
yr4	2006	20	20		1				3	2	8	5	1																					2.91				
yr2	2003																																					
yr3	2004																																					
yr4	2005																																					
yr5	2006	8	8									5	3																					3.44				
yr3	2003																																					
yr4	2004																																					
yr5	2005																																					
yr6	2006	11	11						1	1	2	5	2																					3.59				
yr4	2003																																					
yr5	2004																																					
yr6	2005																																					
yr5	2003																																					
yr6	2004																																					
yr6	2003																																					

shading indicates a 'C' grade (at the expected standard) on the VELS scale.

- (1) Students in group
- (2) Total assessed

* Note: 2006 benchmarks will not be available until June 2007.



Teacher Assessments against the VELS - Mathematics (primary)

School no: 1712	LSG History
School name: Pyramid Hill College	2003 7
Source of data: Data retrieved electronically from CASES21 at time of rollover.	2004 7
Explanation: Teacher assessments of student progress against the VELS.	2005 7
	2006 7

Measurement, Chance and Data (pre-2006, the corresponding CSF strand was Measurement)

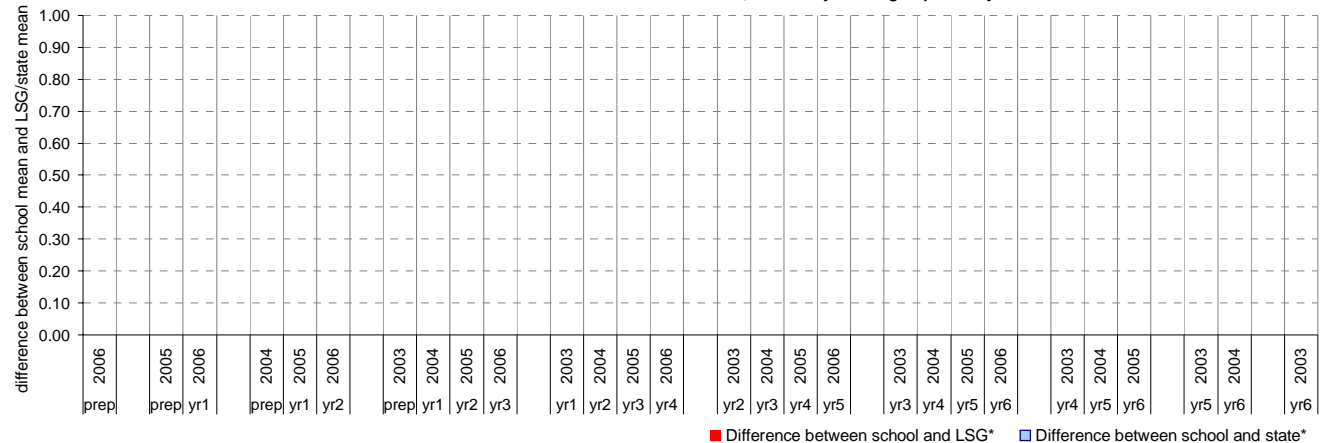
Year Level	Year	Total (1)	Assessed (2)	Level 1			Level 2			Level 3			Level 4			Level 5			Level 6			Level 6E			School mean	Benchmark* means		Diff. between school and ...	
				0.00	0.50	1.00	1.25	1.50	1.75	2.00	2.25	2.50	2.75	3.00	3.25	3.50	3.75	4.00	4.25	4.50	4.75	5.00	5.25	5.50		5.75	6.00	6.25	6.50
prep	2006	8	8	8																					1.00				
prep	2005																												
yr1	2006	12	12				12																		1.50				
prep	2004																												
yr1	2005																												
yr2	2006	9	9				2 6			1															1.97				
prep	2003																												
yr1	2004																												
yr2	2005																												
yr3	2006	16	16	1			2			2 9 1			1												2.38				
yr1	2003																												
yr2	2004																												
yr3	2005																												
yr4	2006	20	20				1			3 3 8			4 1												2.89				
yr2	2003																												
yr3	2004																												
yr4	2005																												
yr5	2006	8	8										5 3												3.44				
yr3	2003																												
yr4	2004																												
yr5	2005																												
yr6	2006	11	11							1 1			2 6 1												3.57				
yr4	2003																												
yr5	2004																												
yr6	2005																												
yr5	2003																												
yr6	2004																												
yr6	2003																												

shading indicates a 'C' grade (at the expected standard) on the VELS scale.

- (1) Students in group
- (2) Total assessed

* Note: 2006 benchmarks will not be available until June 2007.

Difference between school mean and LSG* and state* means, ordered by cohort group over 4 years



Teacher Assessments against the VELS - Year levels 7-10 combined

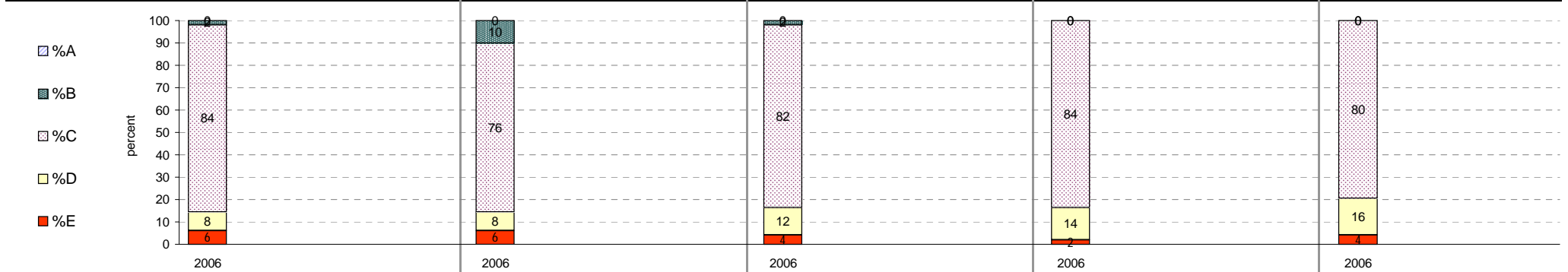
School no: 1712

School name: Pyramid Hill College

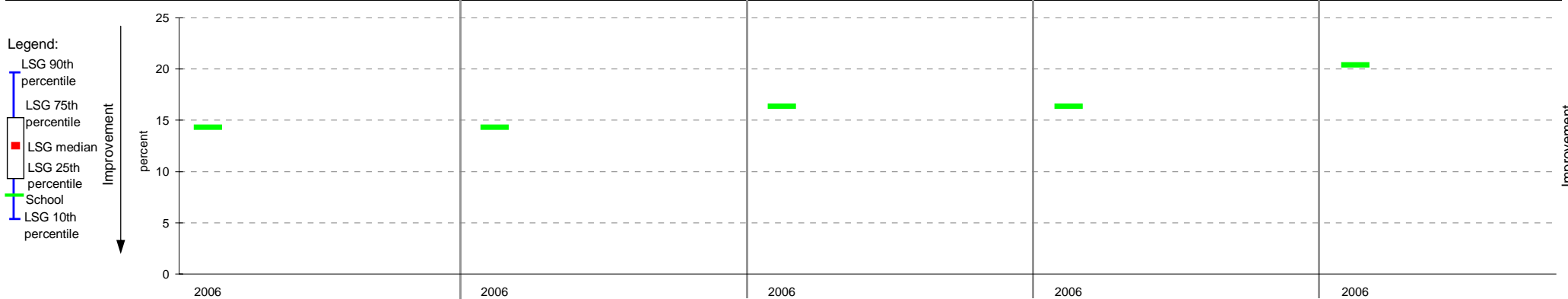
Source of data: Data retrieved electronically from CASES21 at time of rollover.

Explanation: Teacher assessments of student progress against the VELS.

	Reading						Writing						Speaking and Listening						Measurement, Chance & Data*						Structure*					
	total students	% A	% B	% C	% D	% E	total students	% A	% B	% C	% D	% E	total students	% A	% B	% C	% D	% E	total students	% A	% B	% C	% D	% E	total students	% A	% B	% C	% D	
Year Levels: 7-10 (combined)	2006	49	0	2	84	8	6	49	0	10	76	8	6	49	0	2	82	12	4	49	0	0	84	14	2	49	0	0	80	16



Percentage achieving D or E, compared to LSG benchmarks**



Notes:

* pre-2006, the corresponding CSF strand for VELS Measurement, Chance and Data was Chance and Data. The corresponding CSF strand for VELS Structure was Algebra.

** 2006 benchmarks will not be available until June 2007.

Teacher Assessments against the VELS - English (secondary)

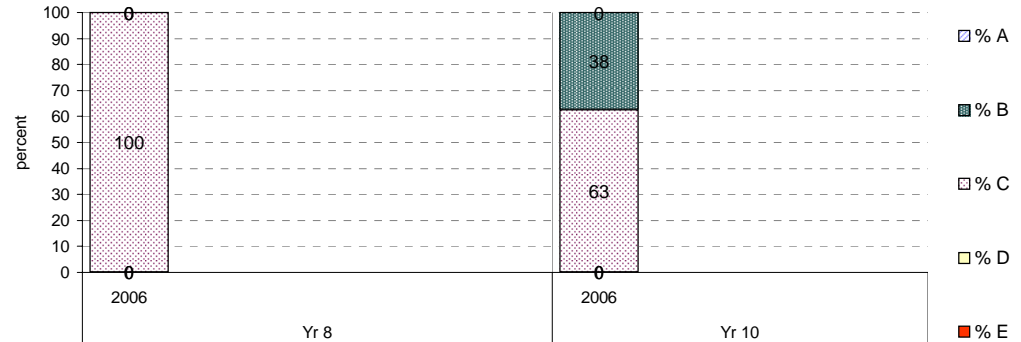
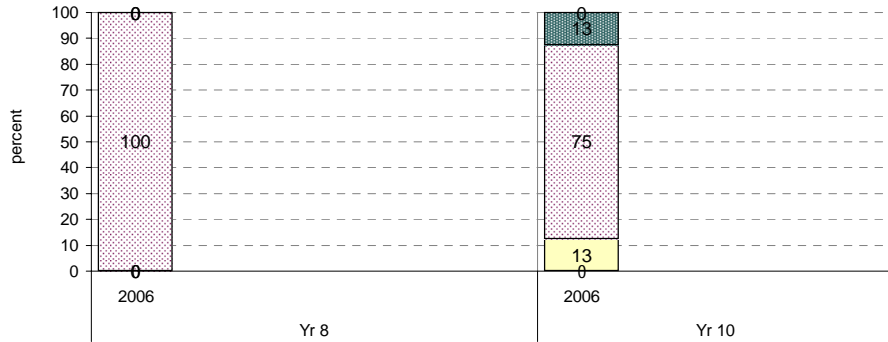
School no: 1712
School name: Pyramid Hill College
Source of data: Data retrieved electronically from CASES21 at time of rollover.
Explanation: Teacher assessments of student progress against the VELS.

Reading

		total students	% A	% B	% C	% D	% E	mean	Benchmarks* (means)	
									LSG	State
Yr 8	2006	11	0	0	100	0	0	4.98		
Yr 10	2006	8	0	13	75	13	0	5.97		

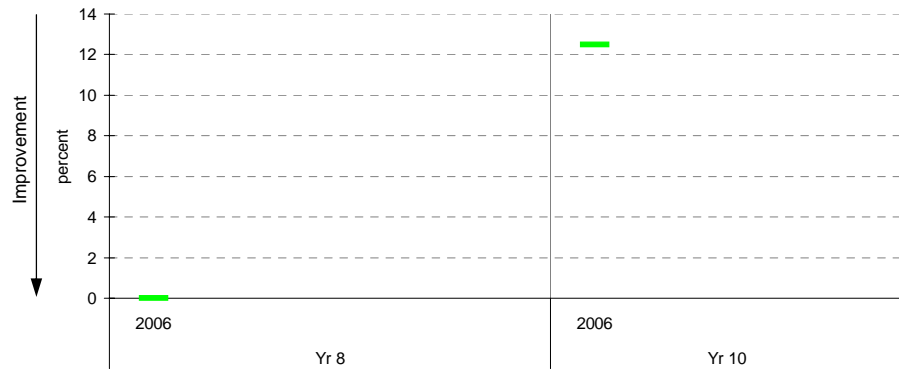
Writing

		total students	% A	% B	% C	% D	% E	mean	Benchmarks* (means)	
									LSG	State
Yr 8	2006	11	0	0	100	0	0	4.98		
Yr 10	2006	8	0	38	63	0	0	6.06		

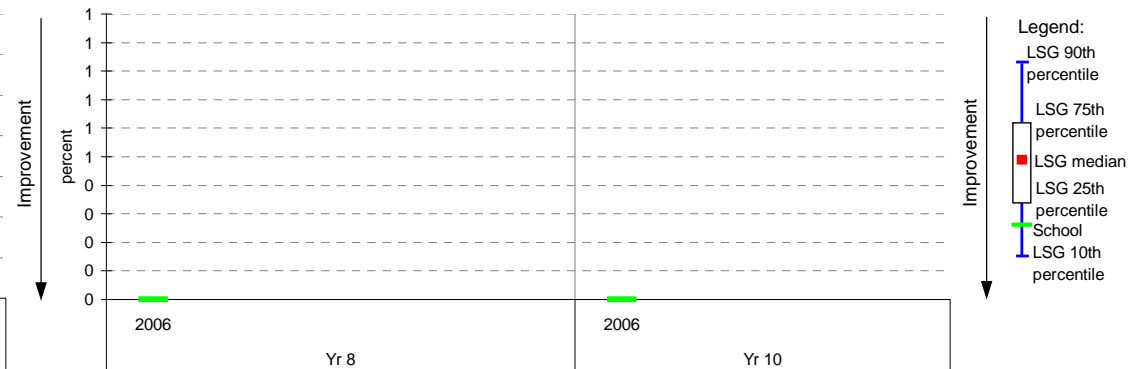


Percentage achieving D or E, compared to LSG benchmarks*

Reading



Writing



* Note: 2006 benchmarks will not be available until June 2007.

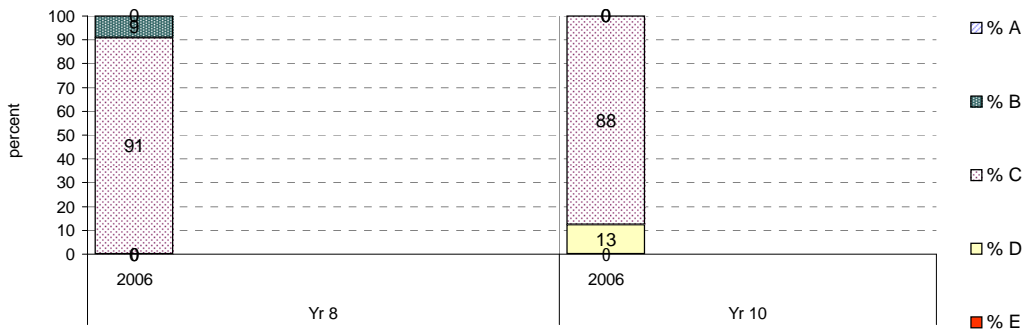
Teacher Assessments against the VELS - English (secondary)

School no: 1712
 School name: Pyramid Hill College
 Source of data: Data retrieved electronically from CASES21 at time of rollover.
 Explanation: Teacher assessments of student progress against the VELS.

Speaking and Listening

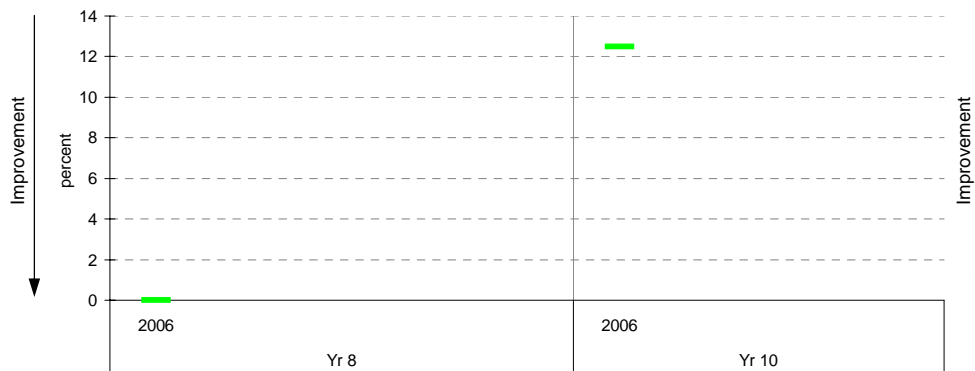
	Year	total students	% A	% B	% C	% D	% E	mean	Benchmarks* (means)	
									LSG	State
Yr 8	2006	11	0	9	91	0	0	4.93		

Yr 10	2006	8	0	0	88	13	0	5.94		
-------	------	---	---	---	----	----	---	------	--	--



Percentage achieving D or E, compared to LSG benchmarks*

Speaking and Listening



Legend:
 LSG 90th percentile
 LSG 75th percentile
 LSG median
 LSG 25th percentile
 School
 LSG 10th percentile

* Note: 2006 benchmarks will not be available until June 2007.

Teacher Assessments against the VELS - Mathematics (secondary)

School no: 1712

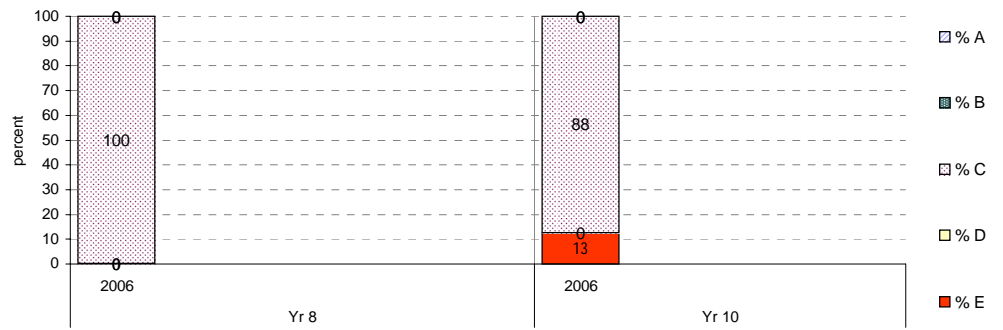
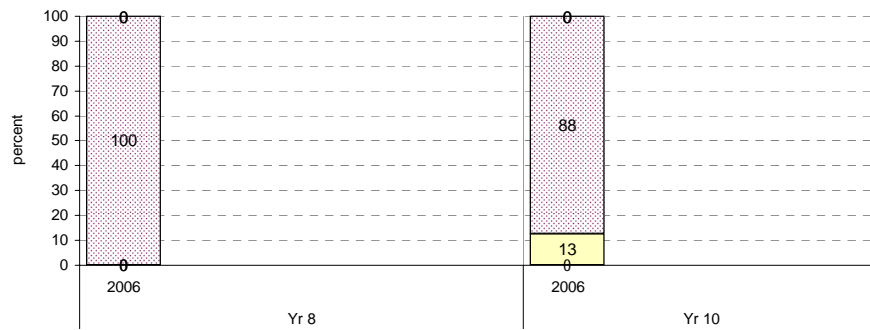
School name: Pyramid Hill College

Source of data: Data retrieved electronically from CASES21 at time of rollover.

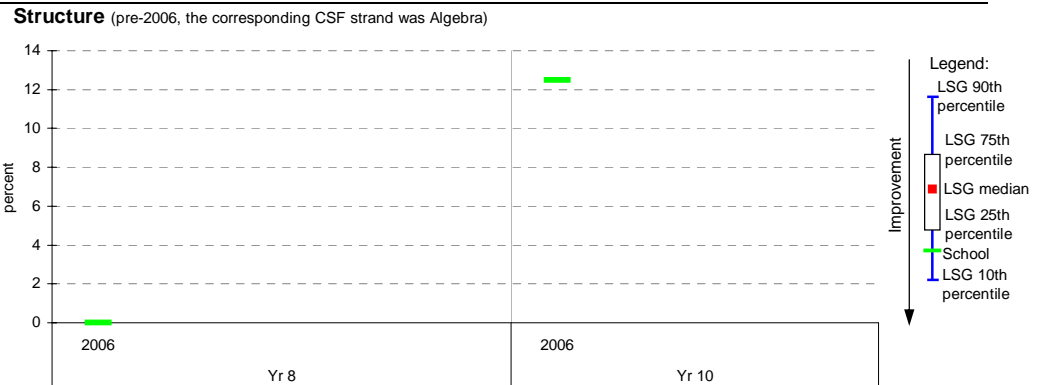
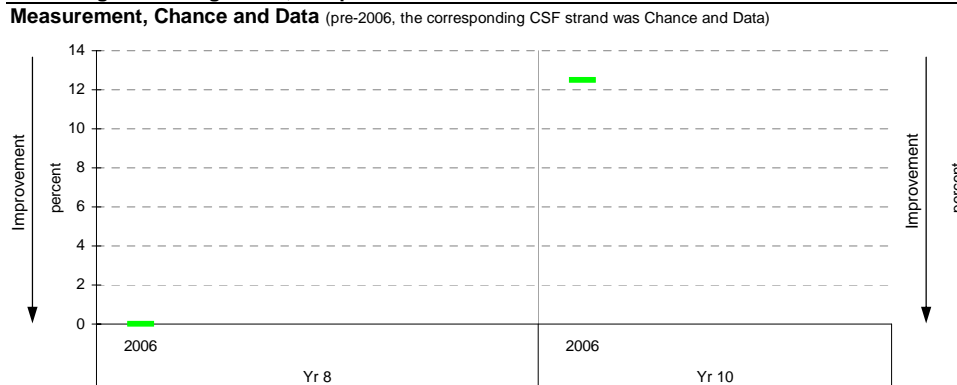
Explanation: Teacher assessments of student progress against the VELS.

Measurement, Chance and Data (pre-2006, the corresponding CSF strand was Chance and Data)										
	Year	total students	% A	% B	% C	% D	% E	mean	Benchmarks* (means)	
									LSG	State
Yr 8	2006	11	0	0	100	0	0	5.00		
Yr 10	2006	8	0	0	88	13	0	5.88		

Structure (pre-2006, the corresponding CSF strand was Algebra)										
	Year	total students	% A	% B	% C	% D	% E	mean	Benchmarks* (means)	
									LSG	State
Yr 8	2006	11	0	0	100	0	0	4.82		
Yr 10	2006	8	0	0	88	0	13	5.81		



Percentage achieving D or E, compared to LSG benchmarks*



* Note: 2006 benchmarks will not be available until June 2007.

Teacher Assessments against the VELS - English (secondary)

School no: 1712	LSG History
School name: Pyramid Hill College	2003 7
Source of data: Data retrieved electronically from CASES21 at time of rollover.	2004 7
Explanation: Teacher assessments of student progress against the VELS.	2005 7
	2006 7

Reading

Year Level	Year	Total (1)	Assessed (2)	Level 1			Level 2			Level 3			Level 4			Level 5			Level 6			Level 6E			School mean	Benchmark* means		Diff. between school and ...		
				0.00	0.50	1.00	1.25	1.50	1.75	2.00	2.25	2.50	2.75	3.00	3.25	3.50	3.75	4.00	4.25	4.50	4.75	5.00	5.25	5.50		5.75	6.00	6.25	6.50	6.75
yr7	2006	14	13										1	2	3	7									4.25					
yr7	2005																													
yr8	2006	11	11														1	10								4.98				
yr7	2004																													
yr8	2005																													
yr9	2006	17	17												2	1	2	12								5.28				
yr7	2003																													
yr8	2004																													
yr9	2005																													
yr10	2006	8	8																			1	6	1		5.97				
yr8	2003																													
yr9	2004																													
yr10	2005																													
yr9	2003																													
yr10	2004																													
yr10	2003																													

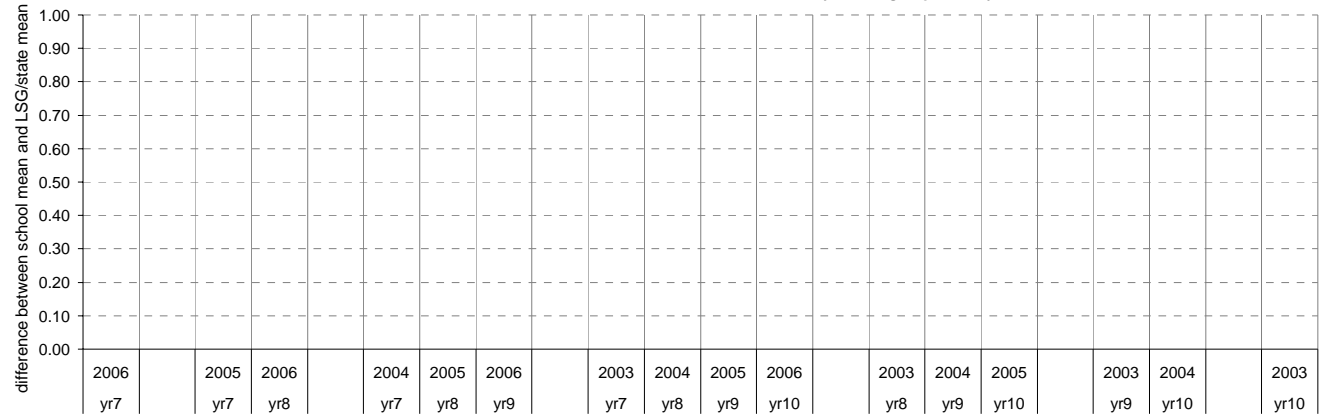
shading indicates a 'C' grade (at the expected standard) on the VELS scale.

(1) Students in group

(2) Total assessed

* Note: 2006 benchmarks will not be available until June 2007.

Difference between school mean and LSG* and state* means, ordered by cohort group over 4 years



■ Difference between school and LSG* ■ Difference between school and state*

Teacher Assessments against the VELS - English (secondary)

School no: 1712	LSG History
School name: Pyramid Hill College	2003 7
Source of data: Data retrieved electronically from CASES21 at time of rollover.	2004 7
Explanation: Teacher assessments of student progress against the VELS.	2005 7
	2006 7

Writing

Year Level	Year	Total (1)	Assessed (2)	Level 1			Level 2			Level 3			Level 4			Level 5			Level 6			Level 6E			School mean	Benchmark* means		Diff. between school and ...		
				0.00	0.50	1.00	1.25	1.50	1.75	2.00	2.25	2.50	2.75	3.00	3.25	3.50	3.75	4.00	4.25	4.50	4.75	5.00	5.25	5.50		5.75	6.00	6.25	6.50	6.75
yr7	2006	14	13										1	2	1	3	6								4.21					
yr7	2005																													
yr8	2006	11	11														1	10								4.98				
yr7	2004																													
yr8	2005																													
yr9	2006	17	17										1		1	1		2	10	2					5.29					
yr7	2003																													
yr8	2004																													
yr9	2005																													
yr10	2006	8	8																1	4	3				6.06					
yr8	2003																													
yr9	2004																													
yr10	2005																													
yr9	2003																													
yr10	2004																													
yr10	2003																													

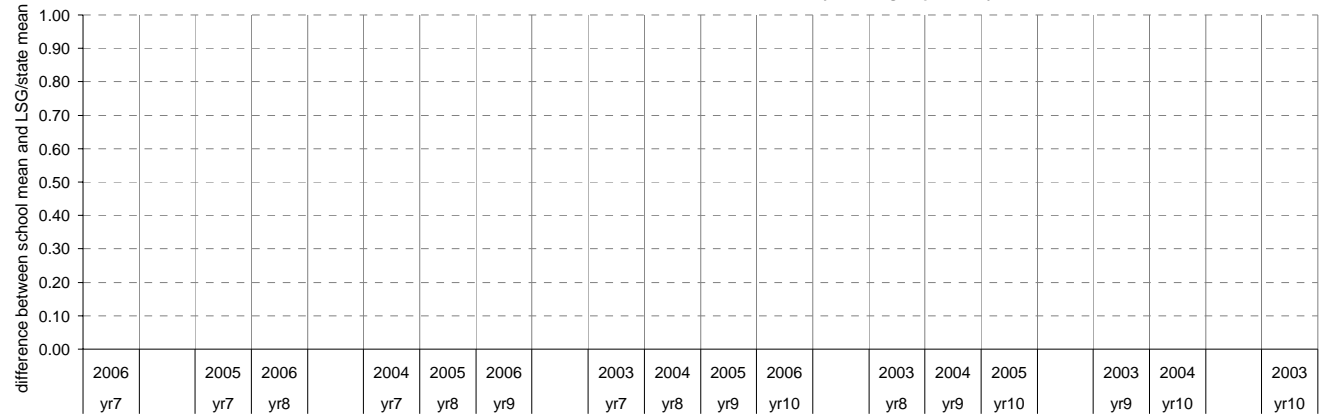
shading indicates a 'C' grade (at the expected standard) on the VELS scale.

(1) Students in group

(2) Total assessed

* Note: 2006 benchmarks will not be available until June 2007.

Difference between school mean and LSG* and state* means, ordered by cohort group over 4 years



■ Difference between school and LSG* ■ Difference between school and state*

Teacher Assessments against the VELS - English (secondary)

School no: 1712	LSG History
School name: Pyramid Hill College	2003 7
Source of data: Data retrieved electronically from CASES21 at time of rollover.	2004 7
Explanation: Teacher assessments of student progress against the VELS.	2005 7
	2006 7

Speaking and Listening

Year Level	Year	Total (1)	Assessed (2)	Level 1			Level 2			Level 3			Level 4			Level 5			Level 6			Level 6E			School mean	Benchmark* means		Diff. between school and ...							
				0.00	0.50	1.00	1.25	1.50	1.75	2.00	2.25	2.50	2.75	3.00	3.25	3.50	3.75	4.00	4.25	4.50	4.75	5.00	5.25	5.50		5.75	6.00	6.25	6.50	6.75	LSG	State	LSG	State	
yr7	2006	14	13											3			4	6											4.31						
yr7	2005																																		
yr8	2006	11	11															4	6	1												4.93			
yr7	2004																																		
yr8	2005																																		
yr9	2006	17	17														2		1	1	1	12										5.26			
yr7	2003																																		
yr8	2004																																		
yr9	2005																																		
yr10	2006	8	8																														5.94		
yr8	2003																																		
yr9	2004																																		
yr10	2005																																		
yr9	2003																																		
yr10	2004																																		
yr10	2003																																		

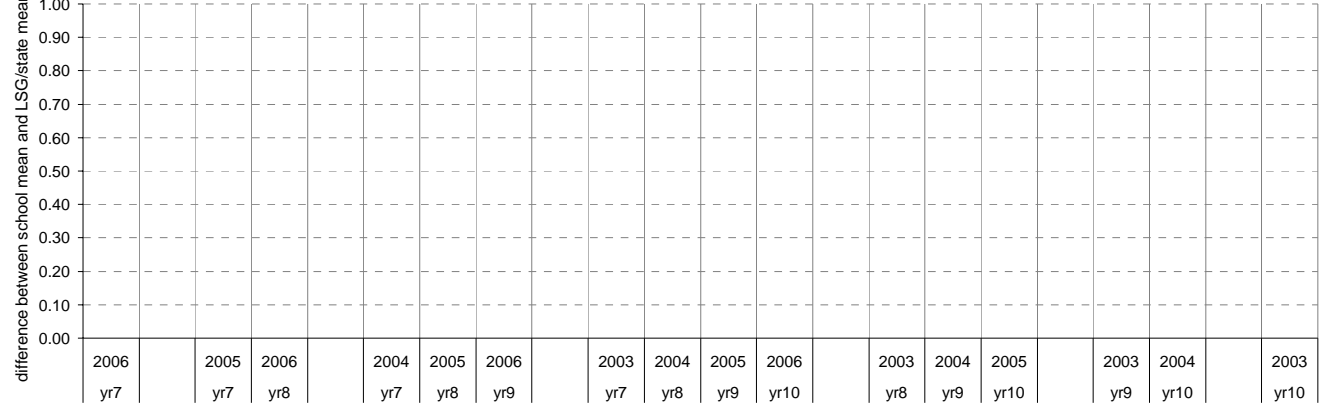
shading indicates a 'C' grade (at the expected standard) on the VELS scale.

(1) Students in group

(2) Total assessed

* Note: 2006 benchmarks will not be available until June 2007.

Difference between school mean and LSG* and state* means, ordered by cohort group over 4 years



■ Difference between school and LSG* ■ Difference between school and state*

Teacher Assessments against the VELS - Mathematics (secondary)

School no: 1712	LSG History
School name: Pyramid Hill College	2003 7
Source of data: Data retrieved electronically from CASES21 at time of rollover.	2004 7
Explanation: Teacher assessments of student progress against the VELS.	2005 7
	2006 7

Measurement, Chance and Data (pre-2006, the corresponding CSF strand was Chance and Data)

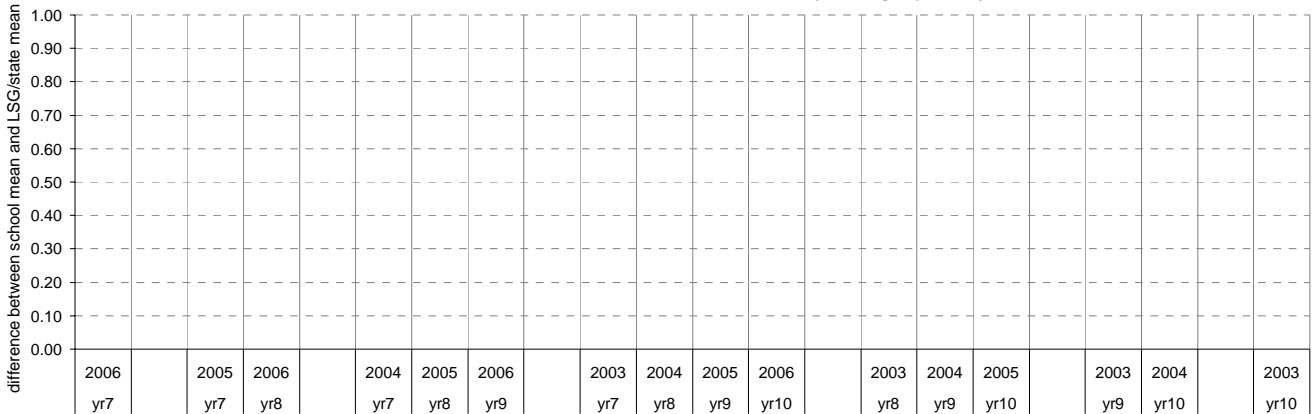
Year Level	Year	Total (1)	Assessed (2)	Level 1			Level 2			Level 3			Level 4			Level 5			Level 6			Level 6E			School mean	Benchmark* means		Diff. between school and ...		
				0.00	0.50	1.00	1.25	1.50	1.75	2.00	2.25	2.50	2.75	3.00	3.25	3.50	3.75	4.00	4.25	4.50	4.75	5.00	5.25	5.50		5.75	6.00	6.25	6.50	6.75
yr7	2006	13	13										1	4			8								4.29					
yr7	2005																													
yr8	2006	11	11															11								5.00				
yr7	2004																													
yr8	2005																													
yr9	2006	17	17										1				1		3	12						5.34				
yr7	2003																													
yr8	2004																													
yr9	2005																													
yr10	2006	8	8																1		1	6				5.88				
yr8	2003																													
yr9	2004																													
yr10	2005																													
yr9	2003																													
yr10	2004																													
yr10	2003																													

shading indicates a 'C' grade (at the expected standard) on the VELS scale.

- (1) Students in group
- (2) Total assessed

* Note: 2006 benchmarks will not be available until June 2007.

Difference between school mean and LSG* and state* means, ordered by cohort group over 4 years



■ Difference between school and LSG* ■ Difference between school and state*

Teacher Assessments against the VELS - Mathematics (secondary)

School no: 1712	LSG History
School name: Pyramid Hill College	2003 7
Source of data: Data retrieved electronically from CASES21 at time of rollover.	2004 7
Explanation: Teacher assessments of student progress against the VELS.	2005 7
	2006 7

Structure (pre-2006, the corresponding CSF strand was Algebra)

Year Level	Year	Total (1)	Assessed (2)	Level 1			Level 2			Level 3			Level 4			Level 5			Level 6			Level 6E			School mean	Benchmark* means		Diff. between school and ...						
				0.00	0.50	1.00	1.25	1.50	1.75	2.00	2.25	2.50	2.75	3.00	3.25	3.50	3.75	4.00	4.25	4.50	4.75	5.00	5.25	5.50		5.75	6.00	6.25	6.50	6.75	LSG	State	LSG	State
yr7	2006	13	13										1	4			1	7											4.27					
yr7	2005																																	
yr8	2006	11	11															8	3												4.82			
yr7	2004																																	
yr8	2005																																	
yr9	2006	17	17										1				1	2			2	11									5.28			
yr7	2003																																	
yr8	2004																																	
yr9	2005																																	
yr10	2006	8	8															1				2	5									5.81		
yr8	2003																																	
yr9	2004																																	
yr10	2005																																	
yr9	2003																																	
yr10	2004																																	
yr10	2003																																	

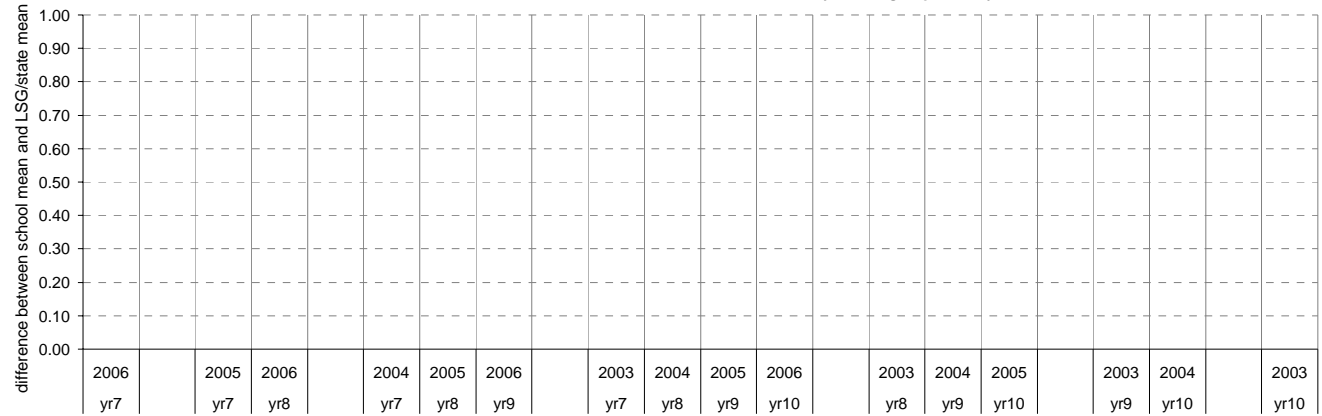
shading indicates a 'C' grade (at the expected standard) on the VELS scale.

(1) Students in group

(2) Total assessed

* Note: 2006 benchmarks will not be available until June 2007.

Difference between school mean and LSG* and state* means, ordered by cohort group over 4 years



■ Difference between school and LSG* ■ Difference between school and state*

AIM Year 3 & 5: Reading ¹

School no: 1712

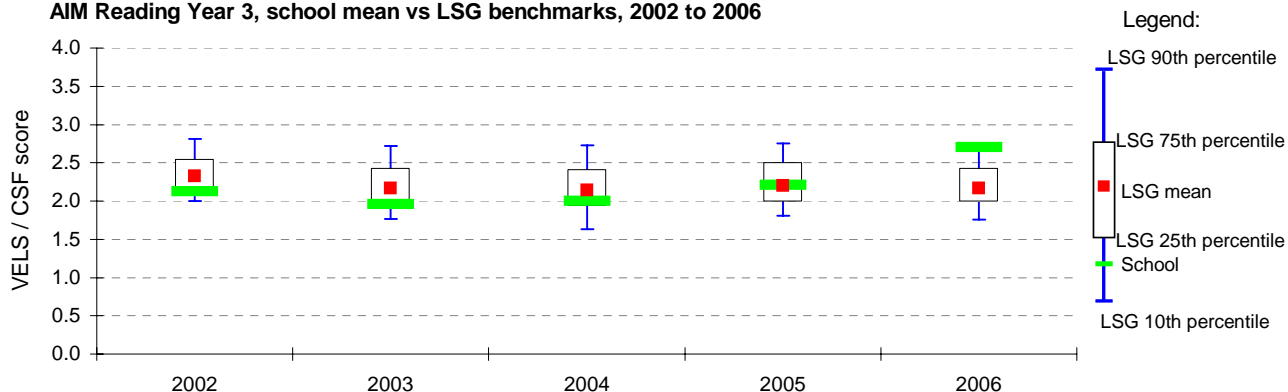
School name: Pyramid Hill College

Explanation: The Achievement Improvement Monitor (AIM) is a statewide assessment program conducted each year for students in Years 3, 5, 7 and 9.

Source of data: Victorian Curriculum and Assessment Authority.

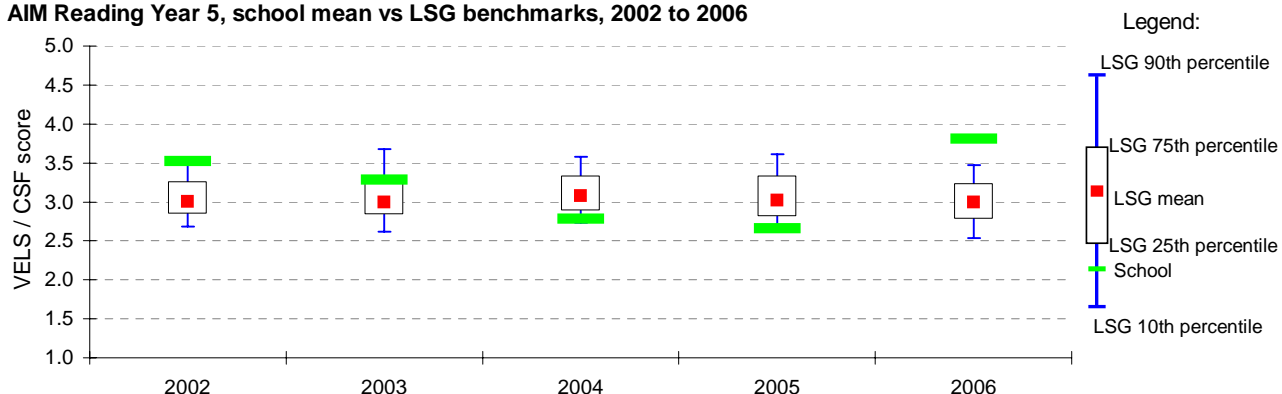
Year	School						LSG					State
	student participation ² (%)	students participated (n)	VELS / CSF				10th ptile*	25th ptile*	75th ptile*	90th ptile*		
			Level 1 (n) (%)	Level 4/5 (n) (%)		mean						
2002	108	13	1 (8)	1 (8)	1 (8)	2.1	2.0	2.2	2.3	2.5	2.8	2.4
2003	100	11	1 (9)	2 (18)	2 (18)	2.0	1.8	2.0	2.2	2.4	2.7	2.3
2004	113	9	1 (11)	3 (33)	3 (33)	2.0	1.6	1.9	2.1	2.4	2.7	2.3
2005	88	15	2 (13)	3 (20)	3 (20)	2.2	1.8	2.0	2.2	2.5	2.8	2.4
2006	81	13	4 (31)	4 (31)	4 (31)	2.7	1.8	2.0	2.2	2.4	2.7	2.3

AIM Reading Year 3, school mean vs LSG benchmarks, 2002 to 2006



Year	School						LSG					State
	student participation ² (%)	students participated (n)	VELS / CSF				10th ptile*	25th ptile*	75th ptile*	90th ptile*		
			Level 2 (n) (%)	Level 5/6 (n) (%)		mean						
2002	93	14	1 (7)	4 (29)	4 (29)	3.5	2.7	2.8	3.0	3.3	3.5	3.1
2003	110	11	1 (9)	4 (36)	4 (36)	3.3	2.6	2.8	3.0	3.3	3.7	3.2
2004	94	15	1 (7)	1 (7)	1 (7)	2.8	2.7	2.9	3.1	3.3	3.6	3.2
2005	90	9	2 (22)	3 (33)	3 (33)	2.7	2.6	2.8	3.0	3.3	3.6	3.2
2006	88	7	3 (43)	3 (43)	3 (43)	3.8	2.5	2.8	3.0	3.2	3.5	3.1

AIM Reading Year 5, school mean vs LSG benchmarks, 2002 to 2006



Year 3 / Year 5 matched cohort ³	Yr 5 students participated (n)	Students in matched cohort (n)	Matched cohort (%)	Average growth (VELS / CSF units)	
				Complete school	Matched cohort
Yr3 2002 / Yr5 2004	15	12	80%	0.7	0.6
Yr3 2003 / Yr5 2005	9	7	78%	0.7	0.6
Yr3 2004 / Yr5 2006	7	6	86%	1.8	1.8

Notes: * distribution of school means
mean score of students

¹ for more detailed AIM data, refer to your school's 2006 AIM Data Service website at <http://aimds.vcaa.vic.edu.au>.

² % student participation = (students who participated in AIM / Feb enrolments) * 100

³ students who participated in AIM at the same school in Years 3 and 5 are called the matched cohort

AIM Year 7 & 9: Reading ¹

School no: 1712

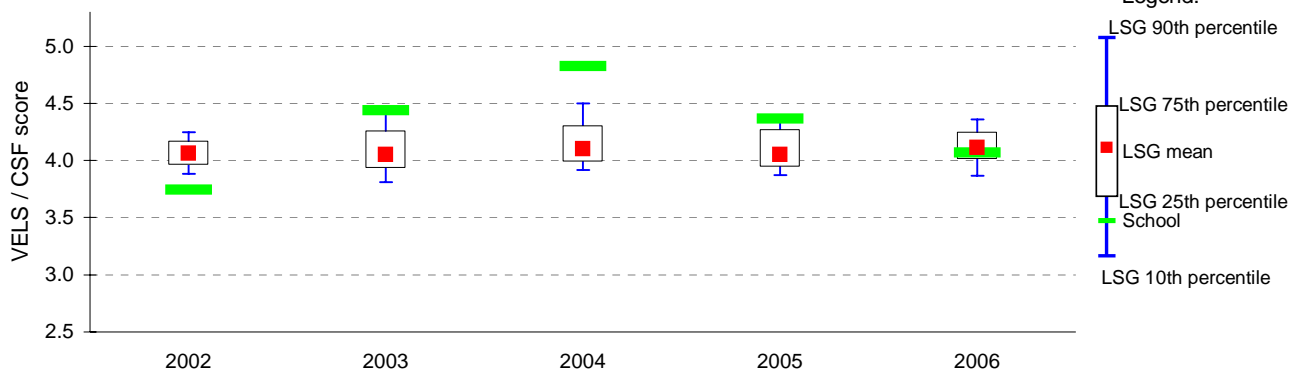
School name: Pyramid Hill College

Explanation: The Achievement Improvement Monitor (AIM) is a statewide assessment program conducted each year for students in Years 3, 5, 7 and 9.

Source of data: Victorian Curriculum and Assessment Authority.

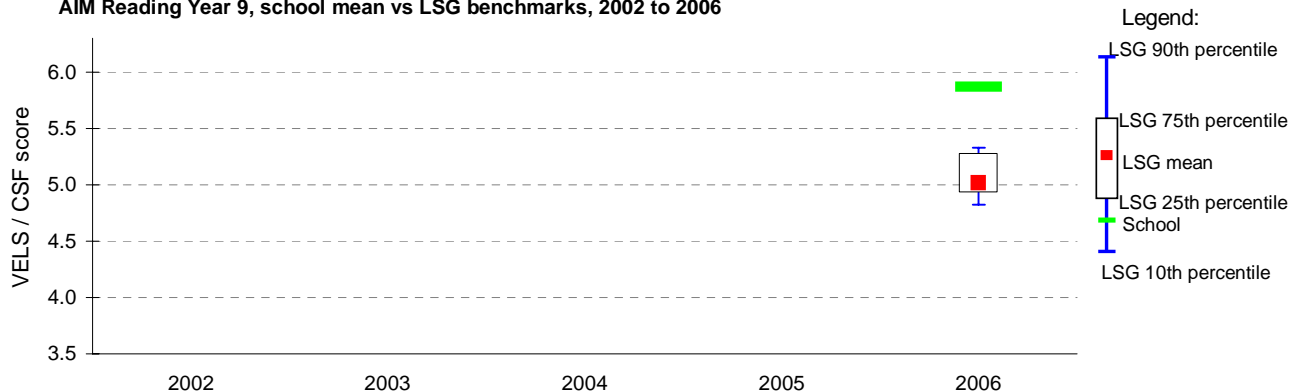
Year	School		VELS / CSF					LSG					State
	student participation ² (%)	students participated (n)	Level 3		Level 6/6E		mean	10th ptile*	25th ptile*	75th mean#	90th ptile*	mean#	
			(n)	(%)	(n)	(%)							
2002	59	10					3.7	3.9	4.0	4.1	4.2	4.2	4.1
2003	80	12			3	25	4.4	3.8	3.9	4.1	4.3	4.5	4.1
2004	100	15			7	47	4.8	3.9	4.0	4.1	4.3	4.5	4.2
2005	100	11			2	18	4.4	3.9	3.9	4.1	4.3	4.4	4.2
2006	117	14	1	7	2	14	4.1	3.9	4.0	4.1	4.2	4.4	4.2

AIM Reading Year 7, school mean vs LSG benchmarks, 2002 to 2006



Year	School		VELS / CSF					LSG					State
	student participation ² (%)	students participated (n)	Level 4		Level 6E		mean	10th ptile*	25th ptile*	75th mean#	90th ptile*	mean#	
			(n)	(%)	(n)	(%)							
2006	79	11					5.9	4.8	4.9	5.0	5.3	5.3	5.1

AIM Reading Year 9, school mean vs LSG benchmarks, 2002 to 2006



Year 7 / Year 9 matched cohort ³	Yr 9 students participated (n)	Students in matched cohort (n)	Matched cohort (%)	Average growth (VELS / CSF units)	
				Complete school	Matched cohort
Yr7 2004 / Yr9 2006	11	9	82%	1.0	0.9

Notes: * distribution of school means
mean score of students

¹ for more detailed AIM data, refer to your school's 2006 AIM Data Service website at <http://aimds.vcaa.vic.edu.au>.

² % student participation = (students who participated in AIM / Feb enrolments) * 100

³ students who participated in AIM at the same school in Years 7 and 9 are called the matched cohort

⁴ Year 7 data for 2004 and 2005 includes test results from AIM online

⁵ AIM Year 9 was introduced in 2006. The percentage of secondary and pri/sec schools with Year 9 students that participated in 2006 AIM was: 77%

AIM Year 3 & 5: Number ¹

School no: 1712

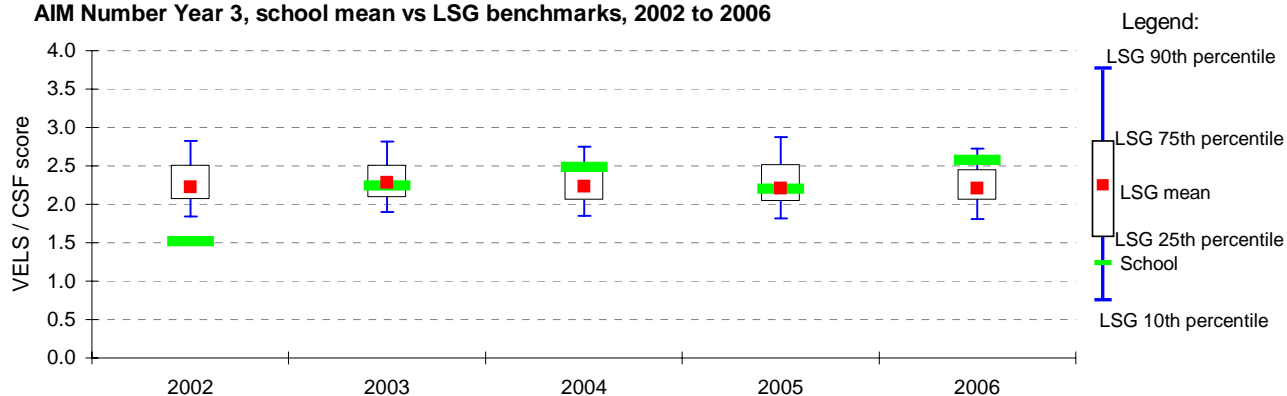
School name: Pyramid Hill College

Explanation: The Achievement Improvement Monitor (AIM) is a statewide assessment program conducted each year for students in Years 3, 5, 7 and 9.

Source of data: Victorian Curriculum and Assessment Authority.

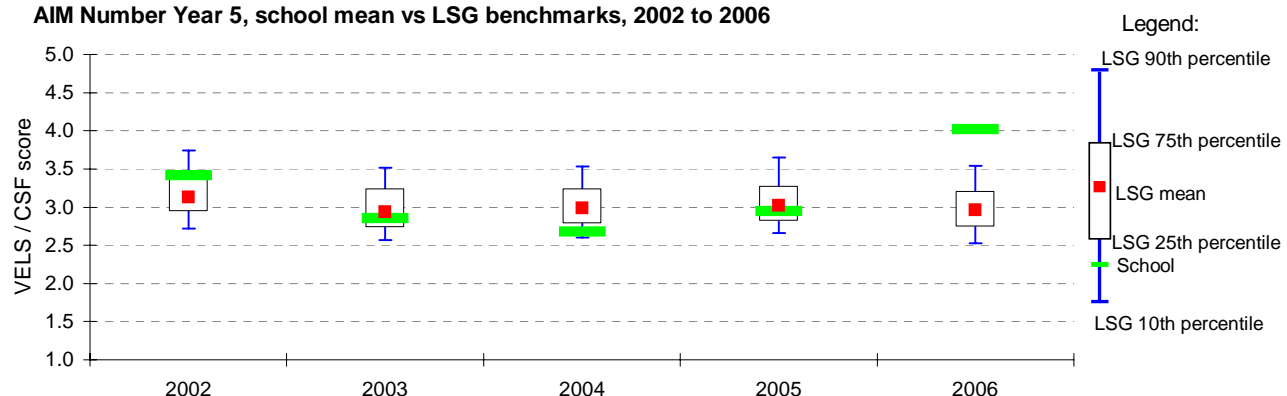
Year	School						LSG					State	
	student participation ² (%)	students participated (n)	VELS / CSF				10th ptile*	25th ptile*	75th ptile*	90th ptile*			
			Level 1 (n)	Level 1 (%)	Level 4/5 (n)	Level 4/5 (%)					mean		
2002	92	11	3	27			1.5	1.8	2.1	2.2	2.5	2.8	2.4
2003	91	10	1	10	2	20	2.2	1.9	2.1	2.3	2.5	2.8	2.4
2004	113	9	2	22	2	22	2.5	1.8	2.1	2.2	2.4	2.8	2.4
2005	94	16	1	6	2	6	2.2	1.8	2.0	2.2	2.5	2.9	2.4
2006	94	15	6	40	2	6	2.6	1.8	2.1	2.2	2.5	2.7	2.4

AIM Number Year 3, school mean vs LSG benchmarks, 2002 to 2006



Year	School						LSG					State	
	student participation ² (%)	students participated (n)	VELS / CSF				10th ptile*	25th ptile*	75th ptile*	90th ptile*			
			Level 2 (n)	Level 2 (%)	Level 5/6 (n)	Level 5/6 (%)					mean		
2002	93	14	2	14	3	4	3.4	2.7	2.9	3.1	3.4	3.7	3.3
2003	100	10	1	10	1	10	2.9	2.6	2.7	2.9	3.2	3.5	3.1
2004	88	14	1	7	2	7	2.7	2.6	2.8	3.0	3.2	3.5	3.2
2005	90	9	1	11	2	11	2.9	2.7	2.8	3.0	3.3	3.6	3.2
2006	88	7	3	43	3	4	4.0	2.5	2.7	3.0	3.2	3.5	3.2

AIM Number Year 5, school mean vs LSG benchmarks, 2002 to 2006



Year 3 / Year 5 matched cohort ³	Yr5 students participated (n)	Students in matched cohort (n)	Matched cohort (%)	Average growth (VELS / CSF units)	
				Complete school	Matched cohort
Yr3 2002 / Yr5 2004	14	10	71%	1.2	1.1
Yr3 2003 / Yr5 2005	9	6	67%	0.7	0.8
Yr3 2004 / Yr5 2006	7	6	86%	1.5	1.4

Notes: * distribution of school means

mean score of students

¹ for more detailed AIM data, refer to your school's 2006 AIM Data Service website at <http://aimds.vcaa.vic.edu.au>.

² % student participation = (students who participated in AIM / Feb enrolments) * 100

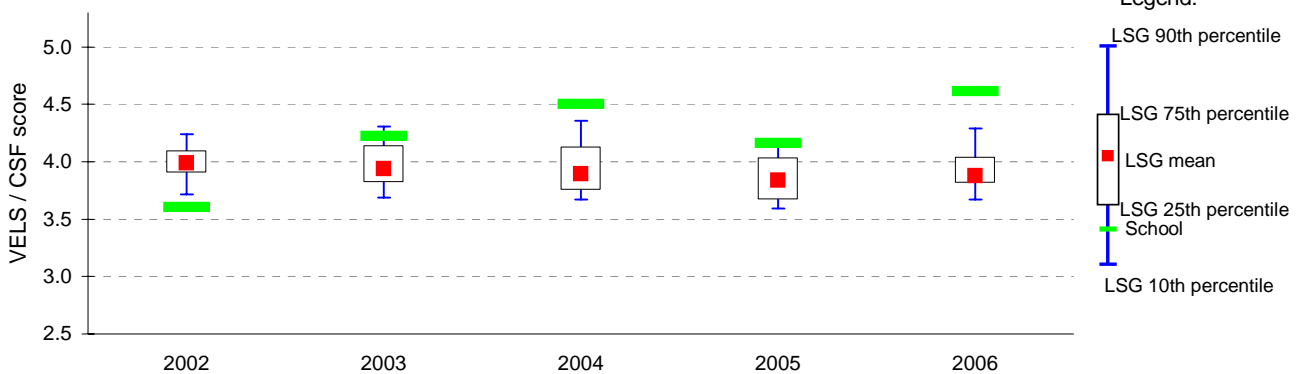
³ students who participated in AIM at the same school in Years 3 and 5 are called the matched cohort

AIM Year 7 & 9: Mathematics ¹

School no: 1712
School name: Pyramid Hill College
Explanation: The Achievement Improvement Monitor (AIM) is a statewide assessment program conducted each year for students in Years 3, 5, 7 and 9.
Source of data: Victorian Curriculum and Assessment Authority.

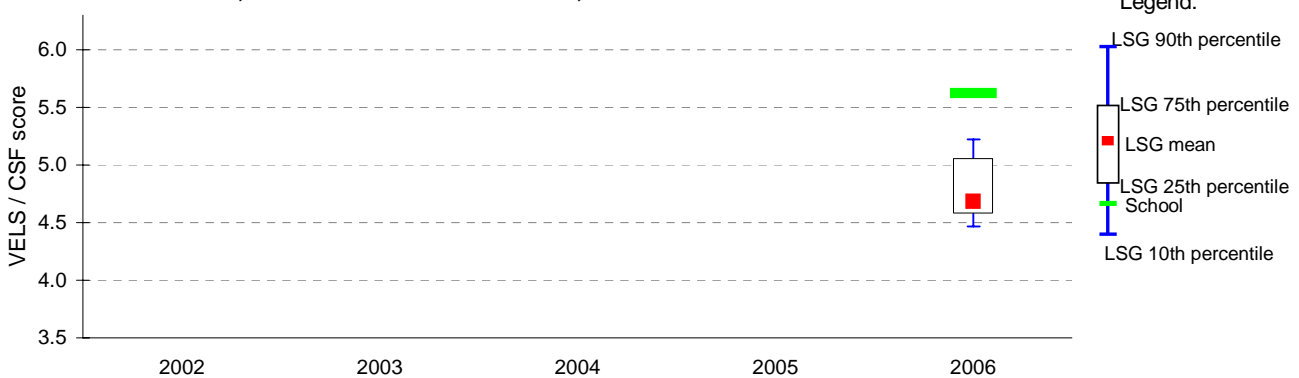
Year	School							LSG					State
	student participation ² (%)	students participated (n)	VELS / CSF				mean	10th ptile*	25th ptile*	75th mean#	90th ptile*	mean#	
			Level 3 (n)	Level 3 (%)	Level 6/6E (n)	Level 6/6E (%)							
2002	71	12	1	8			3.6	3.7	3.9	4.0	4.1	4.2	4.1
2003	80	12	1	8	2	17	4.2	3.7	3.8	3.9	4.1	4.3	4.0
2004	100	15	1	7	6	40	4.5	3.7	3.8	3.9	4.1	4.4	4.0
2005	109	12	2	17			4.2	3.6	3.7	3.8	4.0	4.1	4.0
2006	117	14	3	21			4.6	3.7	3.8	3.9	4.0	4.3	4.0

AIM Maths Year 7, school mean vs LSG benchmarks, 2002 to 2006



Year	School							LSG					State
	student participation ² (%)	students participated (n)	VELS / CSF				mean	10th ptile*	25th ptile*	75th mean#	90th ptile*	mean#	
			Level 4 (n)	Level 4 (%)	Level 6E (n)	Level 6E (%)							
2006	86	12					5.6	4.5	4.6	4.7	5.1	5.2	4.8

AIM Maths Year 9, school mean vs LSG benchmarks, 2002 to 2006



Year 7 / Year 9 matched cohort ³	Yr 9 students participated (n)	Students in matched cohort (n)	Matched cohort (%)	Average growth (VELS / CSF units)	
				Complete school	Matched cohort
Yr7 2004 / Yr9 2006	12	10	83%	1.1	1.0

Notes: * distribution of school means
mean score of students

¹ for more detailed AIM data, refer to your school's 2006 AIM Data Service website at <http://aimds.vcaa.vic.edu.au>.

² % student participation = (students who participated in AIM / Feb enrolments) * 100

³ students who participated in AIM at the same school in Years 7 and 9 are called the matched cohort

⁴ Year 7 data for 2004 and 2005 includes test results from AIM online

⁵ AIM Year 9 was introduced in 2006. The percentage of secondary and pri/sec schools with Year 9 students that participated in 2006 AIM was: 77%

VCE

School no: 1712
School name: Pyramid Hill College
Explanation: Only 2006 studies, which at least 1 student completed, are included.
Source of data: Victorian Curriculum and Assessment Authority.

Notes:	2002 LSG=7		2003 LSG=7		2004 LSG=7				2005 LSG=7				2006 LSG=7				2006 school mean less 2005 school mean
	No. of students	school mean	No. of students	school mean	No. of students	school mean	LSG mean	Diff	No. of students	school mean	LSG mean	Diff	No. of students	school mean	LSG mean	Diff	
- After allstudy, English, Further Maths and Maths Methods, studies are listed in descending order of the number of students in the latest year.																	
- From 2005, VET study scores are included.																	
- From 2005, data is based on 'reported' study scores, not 'achieved' study scores.																	

allstudy

English EN01
 Further Mathematics MA07
 Mathematical Methods MA08

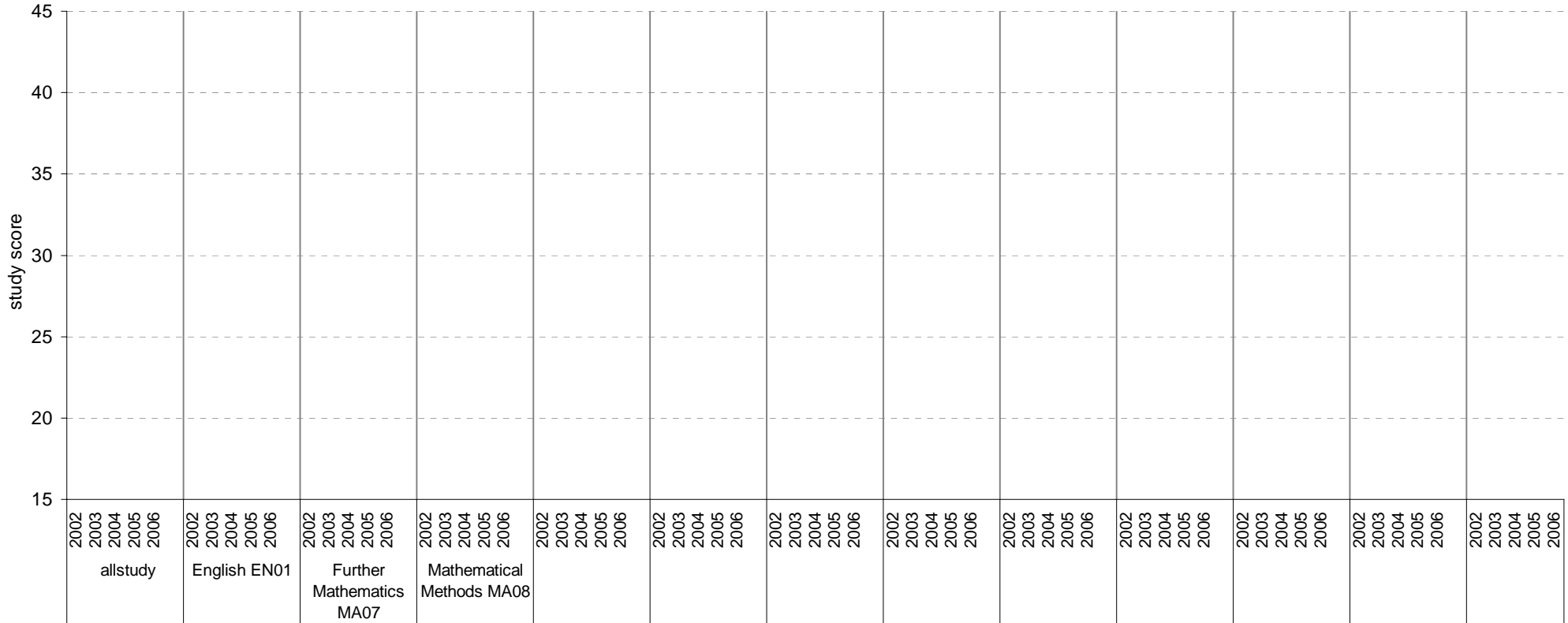
VCE

School no: 1712

School name: Pyramid Hill College

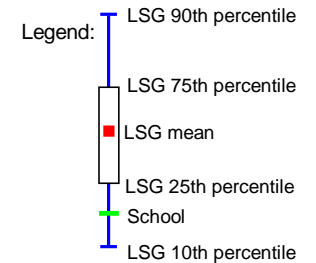
Source of data: Victorian Curriculum and Assessment Authority.

School mean plotted against the distribution of school means for schools in that LSG, for each study, 2002 to 2006



Notes:

- After allstudy, English and the two mathematics, the remaining studies are charted in order of the number of students who completed that study in 2006, from highest to lowest.
- From 2005, VET study scores are included.
- From 2005, data is based on 'reported' study scores, not 'achieved' study scores.
- Care should be taken when interpreting this chart, as the number of students may be small.
- Only the results of the 31 studies with the most students (apart from English and the two mathematics) are charted.

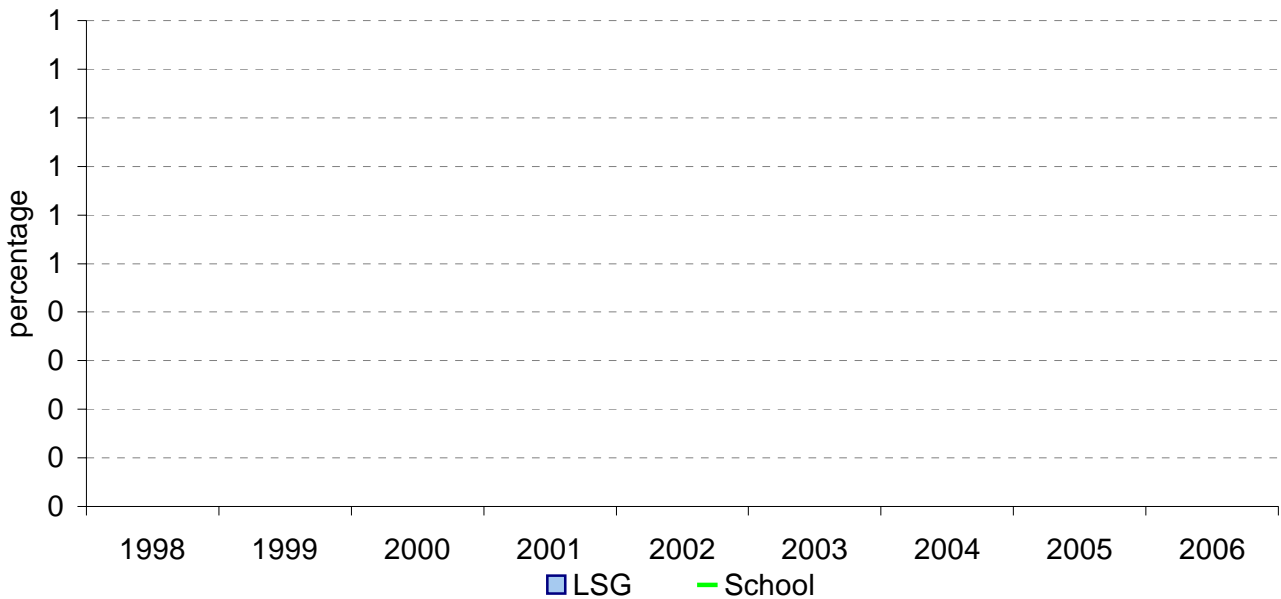


VCE: Study Scores of 40 or more

School no: 1712
School name: Pyramid Hill College
Explanation: Of all VCE study scores, the percentage that were 40 or more.
Source of data: Victorian Curriculum and Assessment Authority.

Year	School		LSG	State (all govt schools)
	Total study scores	% 40 or more*	% 40 or more	% 40 or more
1998				
1999				
2000				
2001				
2002				
2003				
2004				
2005				
2006				

VCE percentage of study scores of 40 or more*, 1998 to 2006



Note:

* Prior to 2005, this data may not match the information published in *The Age*. Data presented on this page prior to 2005 does not include study scores from the small number of VET studies that are given study scores.
 - From 2005, VET study scores are included.
 - From 2005, data is based on 'reported' study scores, not 'achieved' study scores.

VET

School no: 1712

School name: Pyramid Hill College

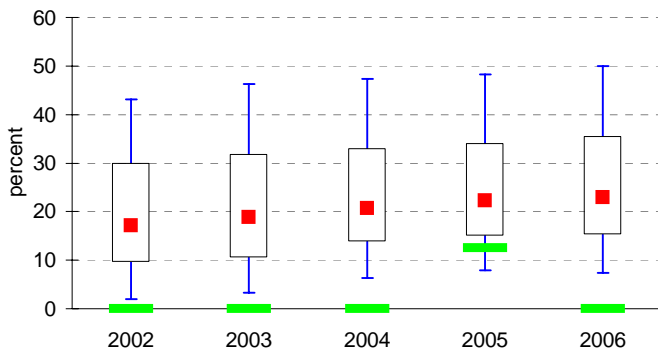
Source of data: Victorian Curriculum and Assessment Authority.

More detailed information is available on the VASS system provided by VCAA.

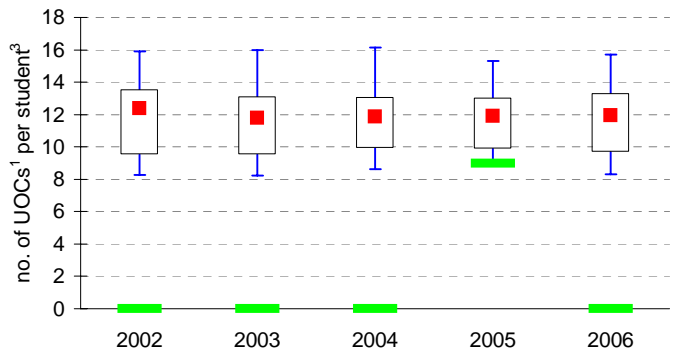
Participation					Completion		
School					State		
Year	Level	No. students undertaking at least 1 UOC ¹	% students ² undertaking at least 1 UOC ¹	Avg no. UOCs ¹ undertaken per student ³	No. UOCs ¹ with satisfactory result	% UOCs ¹ with satisfactory result	% UOCs ¹ with satisfactory result
2002	10	0	0	-	-	-	-
	11	0	0	-	-	-	-
	12	0	0	-	-	-	-
	10-12	0	0	-	17.2	-	73.7
2003	10	0	0	-	-	-	-
	11	0	0	-	-	-	-
	12	0	0	-	-	-	-
	10-12	0	0	-	18.8	-	73.5
2004	10	0	0	-	-	-	-
	11	0	0	-	-	-	-
	12	0	0	-	-	-	-
	10-12	0	0	-	20.7	-	71.3
2005	10	1	12.5	9	9	100	-
	11	0	0	-	-	-	-
	12	0	0	-	-	-	-
	10-12	1	12.5	9	22.3	100	72.6
2006	10	0	0	-	-	-	-
	11	0	0	-	-	-	-
	12	0	0	-	-	-	-
	10-12	0	0	-	23.0	-	75.6

Participation

% Yr10-12 students² undertaking at least 1 UOC¹, school plotted on state benchmarks, 2002 to 2006

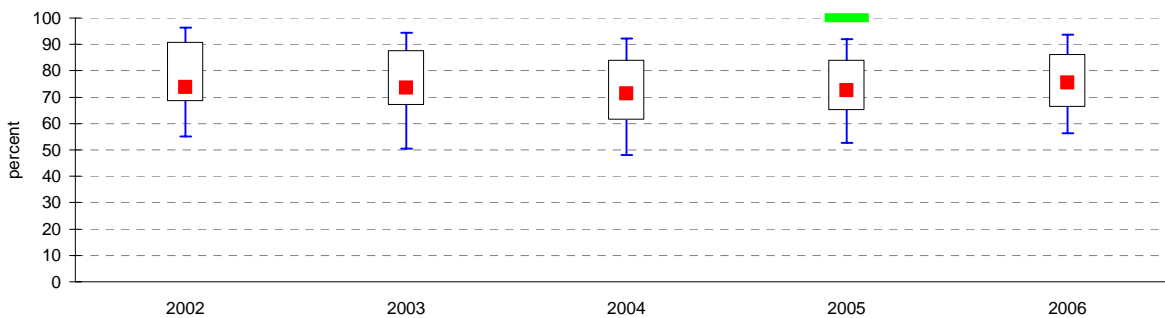


Avg no. UOCs¹ undertaken per student³, school plotted on state benchmarks, 2002 to 2006



Completion

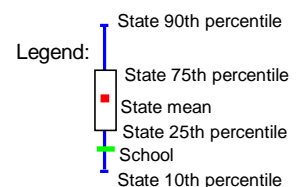
% UOCs¹ with satisfactory result, school plotted on state benchmarks, 2002 to 2006



Notes:¹ UOC = Unit(s) of Competency.

² % students based on year 10, 11 and 12 August enrolments.

³ only includes students undertaking at least 1 UOC.



VCAL

School no: 1712

School name: Pyramid Hill College

Explanation: 'No. of VCAL credits undertaken' is calculated by summing the number of credits undertaken by each VCAL student across all VCAL students.

The data contained in this page is for all VCAL strands and levels combined.

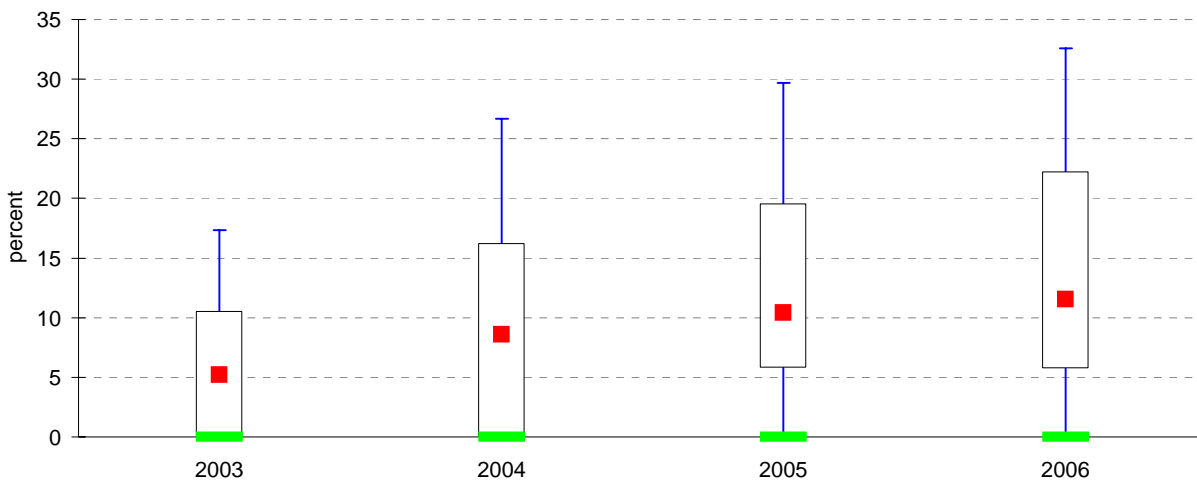
Source of data: Victorian Curriculum and Assessment Authority.

More detailed information is available on the VASS system provided by VCAA.

Participation						Completion		
		School		State		School		State
Year	Level	No. students ¹	No. students undertaking VCAL	% students ¹ undertaking VCAL	% students ¹ undertaking VCAL	No. VCAL unit credits undertaken	% satisfactory completion of VCAL credits	% satisfactory completion of VCAL credits
2003	11-12	-	0	0	5.2	0	-	73.6
2004	11-12	-	0	0	8.6	0	-	70.4
2005	11-12	-	0	0	10.4	0	-	72.9
2006	11-12	-	0	0	11.5	0	-	77.7

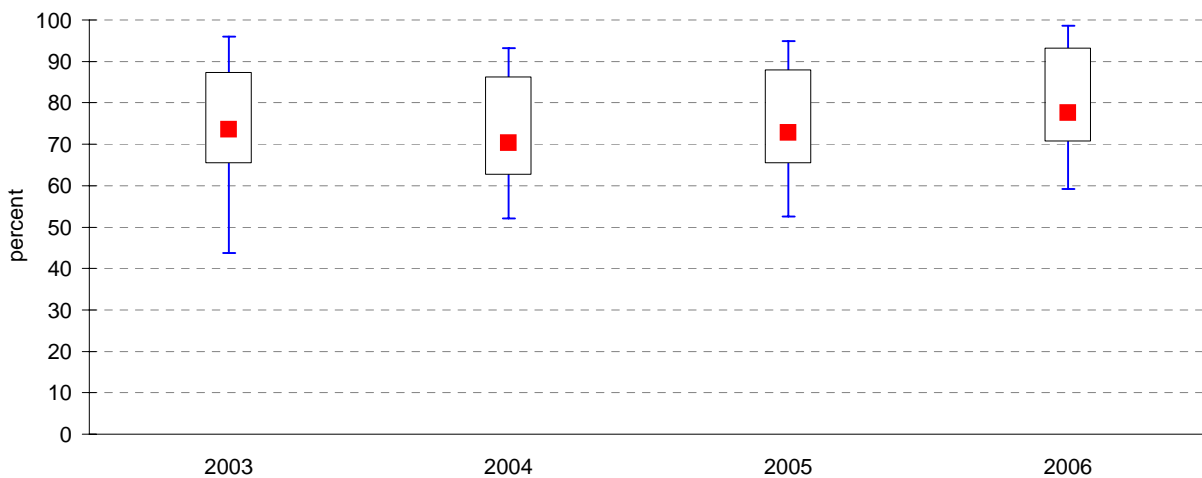
Participation

% Yr11-12 students¹ undertaking VCAL, school plotted on state benchmarks, 2003 to 2006



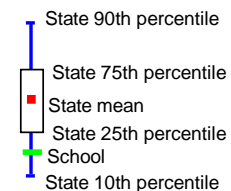
Completion

% satisfactory completion of VCAL credits, school plotted on state benchmarks, 2003 to 2006



Notes:¹ No. and % students based on year 11 and 12 August enrolments.

Legend:



Teacher Assessment of Student Progress (PSD students)

School no: 1712

School name: Pyramid Hill College

Explanation: Teachers assess their students' progress against the 8 VELS Domains / CSF KLAs using a 6-point scale (students in special schools and those who cannot be assessed against the VELS / CSF).

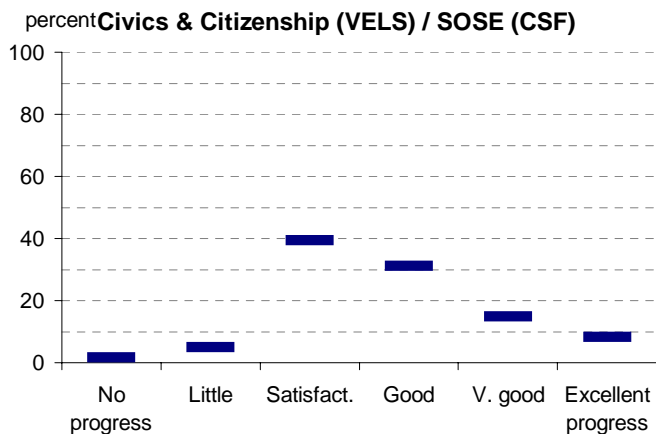
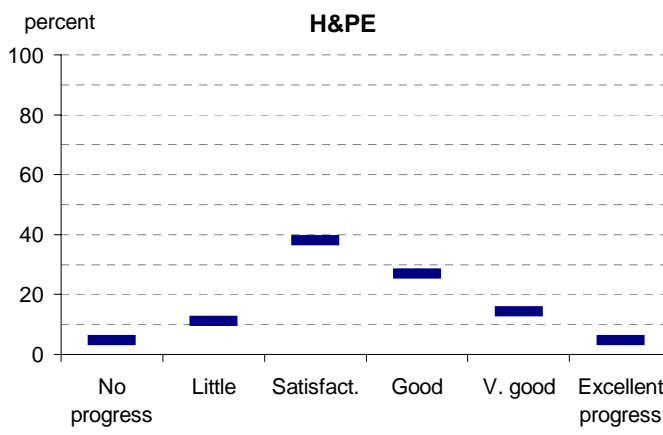
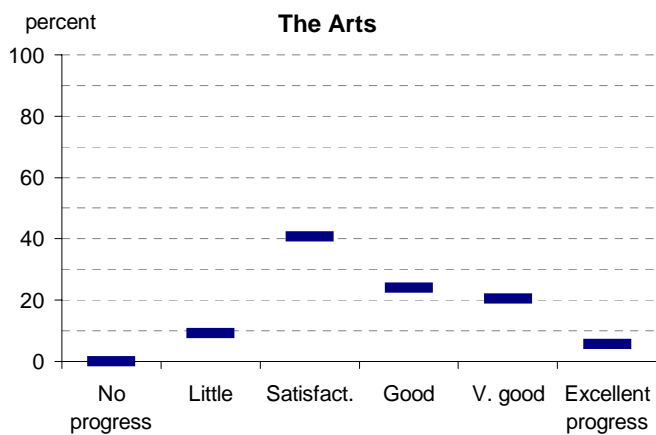
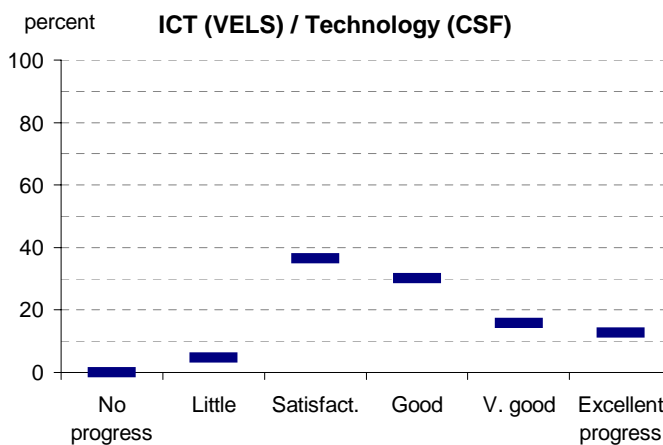
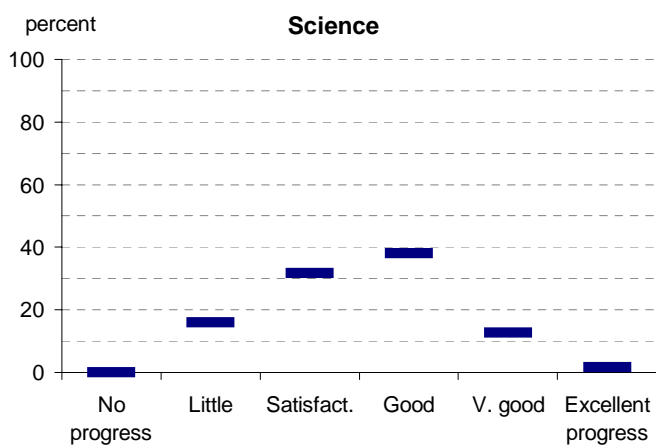
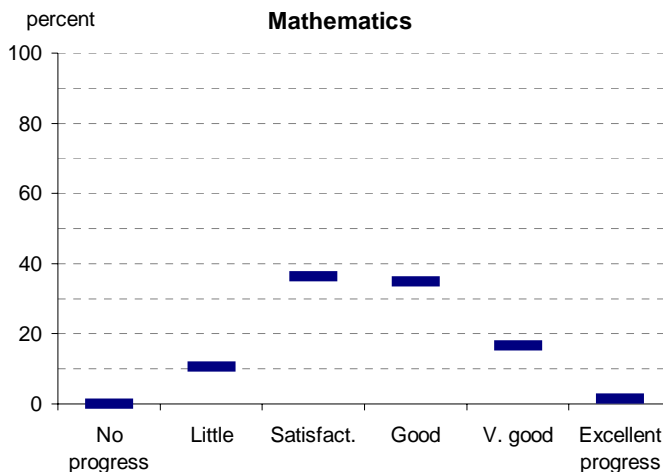
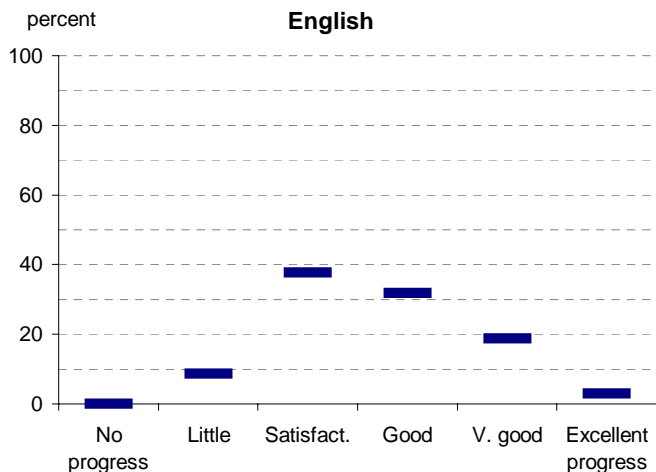
Source of data: Data transmitted from school to DoE via an online web-form.

	No progress (%)	Little progress (%)	Satisfactory progress (%)	Good progress (%)	Very good progress (%)	Excellent progress (%)	Total students assessed ¹ (no.)
2002 (by CSF KLA)							
English							
Mathematics							
Science							
Technology							
The Arts							
H&PE							
SOSE							
2003 (by CSF KLA)							
English							
Mathematics							
Science							
Technology							
The Arts							
H&PE							
SOSE							
2004 (by CSF KLA)							
English							
Mathematics							
Science							
Technology							
The Arts							
H&PE							
SOSE							
2005 (by CSF KLA)							
English							
Mathematics							
Science							
Technology							
The Arts							
H&PE							
SOSE							
2006 (by VELS Domain)							
English							
Mathematics							
Science							
ICT							
The Arts							
H&PE							
Civics & Citizenship							
2005 Pri/Sec state benchmarks (by CSF KLA) (2006 benchmarks are not available at this stage)							
English		9	38	32	19	3	
Mathematics		11	36	35	17	2	
Science		16	32	38	13	2	
Technology		5	37	30	16	13	
The Arts		9	41	24	20	6	
H&PE	5	11	38	27	14	5	
SOSE	2	5	39	31	15	8	

Note: ¹ If schools provided percentages only, it is not possible to report the number of students assessed. In these cases, the total percentage (100) will be shown.

Teacher Assessment of Student Progress (PSD students)

School no: 1712
 School name: Pyramid Hill College

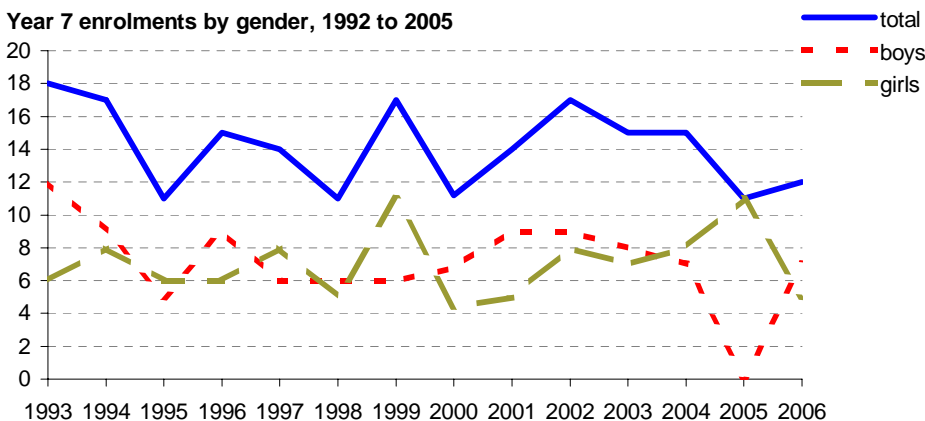
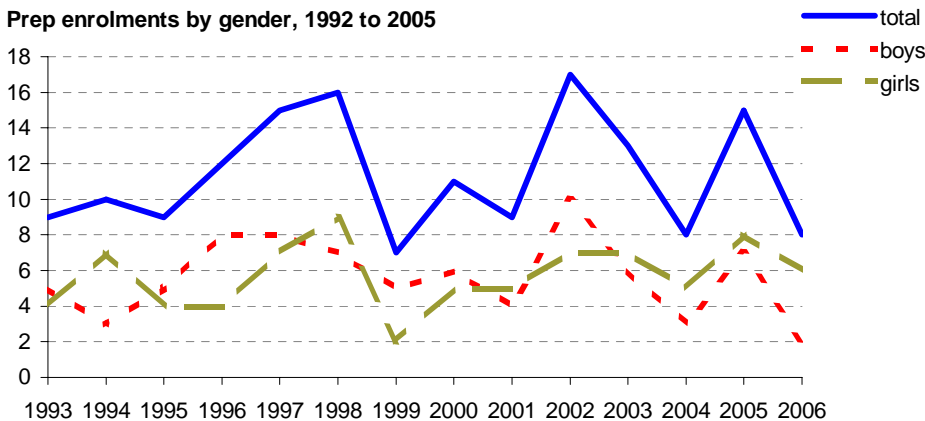
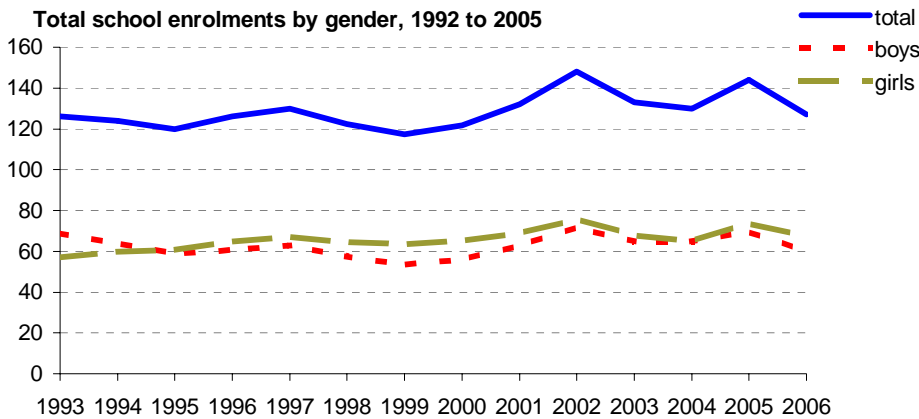


- 2002 (by CSF KLA)
- 2003 (by CSF KLA)
- 2004 (by CSF KLA)
- 2005 (by CSF KLA)
- 2006 (by VELS Domain)

Enrolments

School no: 1712
School name: Pyramid Hill College
Explanation: Enrolments at February census.
Source of data: February census.

Year	Total school enrolment			Prep enrolment			Year 7 enrolments		
	boys	girls	total	boys	girls	total	boys	girls	total
1993	69	57	126	5	4	9	12	6	18
1994	64	60	124	3	7	10	9	8	17
1995	59	61	120	5	4	9	5	6	11
1996	61	65	126	8	4	12	9	6	15
1997	63	67	130	8	7	15	6	8	14
1998	58	65	122	7	9	16	6	5	11
1999	54	64	117	5	2	7	6	11	17
2000	56	65	122	6	5	11	7	4	11
2001	63	69	132	4	5	9	9	5	14
2002	72	76	148	10	7	17	9	8	17
2003	65	68	133	6	7	13	8	7	15
2004	65	65	130	3	5	8	7	8	15
2005	70	74	144	7	8	15		11	11
2006	60	67	127	2	6	8	7	5	12



Apparent Retention

School no: 1712
School name: Pyramid Hill College
Report Year: 2006
Explanation: Apparent retention rates are based on enrolments. For example, Year 7Feb-12Aug apparent retention refers to year 12 enrolment of students in full-time school education in August expressed as a percentage of year 7 enrolments in February five years earlier.
Source of data: February and August census.

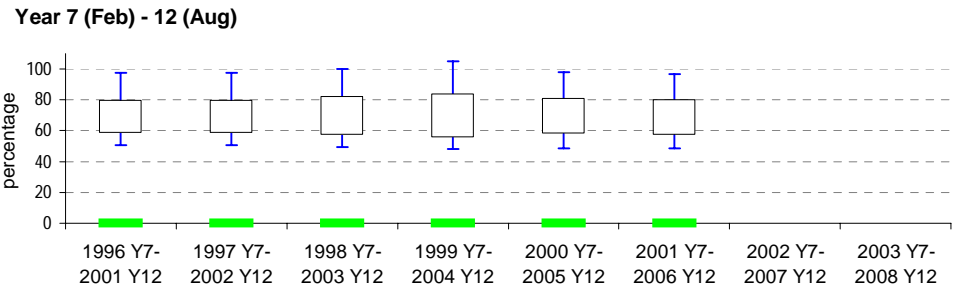
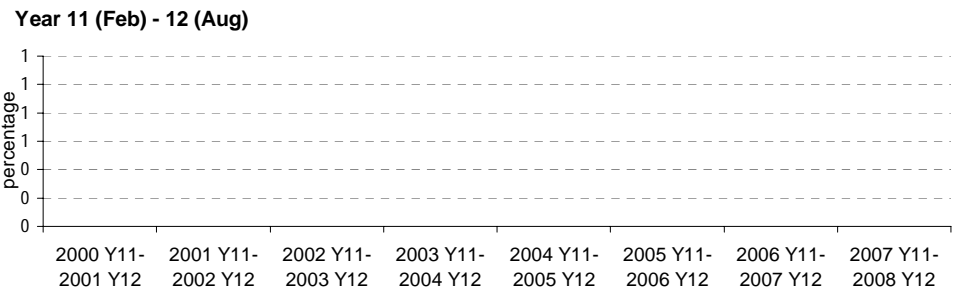
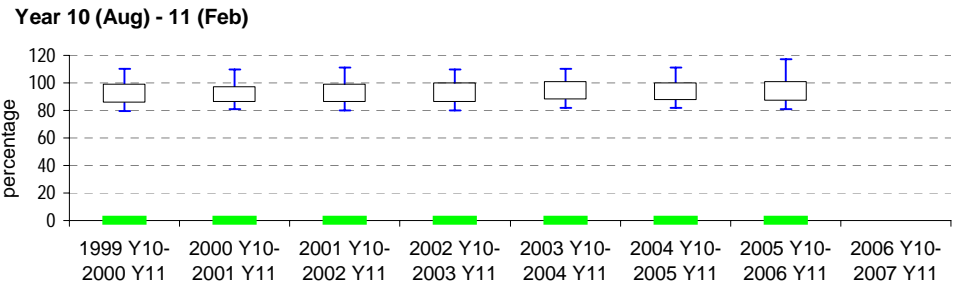
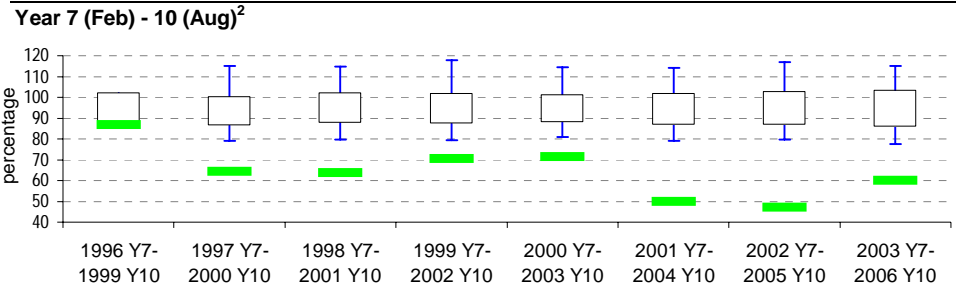
	Cohorts							
Year 7	1996	1997	1998	1999	2000	2001	2002	2003
Year 10	1999	2000	2001	2002	2003	2004	2005	2006
Year 11	2000	2001	2002	2003	2004	2005	2006	
Year 12	2001	2002	2003	2004	2005	2006		
Year 7 (Feb)	no. 15	14	11	17	11.2	14	17	15
Year 10 (Aug)	no. 13	9	7	12	8	7	8	9
Year 7 (Feb) - 10 (Aug)	% 86.7	64.3	63.6	70.6	71.4	50.0	47.1	60.0
LSG mean ³	% 89.9	90.3	88.7	89.0	88.2	88.3	90.7	89.7
State mean ³	% 95.0	96.6	97.3	95.0	96.6	96.3	97.6	97.3
Year 10 (Aug)	no. 13	9	7	12	8	7	8	
Year 11 (Feb)	no. 0	0	0	0	0	0	0	
Year 10 (Aug) - 11 (Feb)	% 0.0	0.0	0.0	0.0	0.0	0.0	0.0	
LSG mean ³	% 99.4	113.1	80.5	81.9	83.0	80.9	82.0	
State mean ³	% 96.7	96.4	96.2	97.7	98.7	98.2	99.0	
Year 11 (Feb)	no.							
Year 12 (Aug)	no.							
Year 11 (Feb) - 12 (Aug)	%							
LSG mean ³	%							
State mean ³	%							
Year 7 (Feb)	no. 15	14	11	17	11.2	14		
Year 12 (Aug)	no. 0	0	0	0	0	0		
Year 7 (Feb) - 12 (Aug)	% 0.0	0.0	0.0	0.0	0.0	0.0		
LSG mean ³	% 74.1	55.5	51.9	52.9	54.6	49.1		
State mean ³	% 75.9	76.7	77.2	76.9	76.8	74.6		

Legend:

	LSG History ¹			
	Year	LSG	Year	LSG
State 90th percentile	2006	7	2002	7
	2005	7	2001	7
State 75th percentile	2004	7	2000	7
	2003	7	1999	7
State 25th percentile				
School				
State 10th percentile				

Notes:
¹ The LSG of the school in the latter year (eg for Year 7 2001 to Year 12 2006, the LSG in 2006).
² 90th and 10th percentiles for Yr7-10 available from 2000 only.

Apparent school retention rates plotted on state benchmarks



Real Retention

School no: 1712
School name: Pyramid Hill College
Report Year: 2006
Explanation: Real retention rates show the percentage of students who have been enrolled at the same school over a period of time.

For example, the formula for the real retention rate for Year 7Feb to 10Aug for school X in 2006 is as follows:

$$\frac{\text{(no. of students enrolled in Yr10 in school X as at August 2006 census and who enrolled prior to 1/3/2003, ie, enrolled in school X at beginning of Yr7)}}{\text{(enrolments in Yr7 Feb in 2003 according to census)}} * 100$$

By definition, real school retention will be less than or equal to 100% (assuming there are no students repeating the year, or accelerating through years).

Generally, real school retention rates are affected by students transferring to another school & students exiting the school system. They are a measure of the 'holding power' of the school.

Source of data: Data retrieved electronically from CASES21 at time of rollover.

		Year 7 cohorts						
Year 7		1997	1998	1999	2000	2001	2002	2003
Year 10		2000	2001	2002	2003	2004	2005	2006
Year 11		2001	2002	2003	2004	2005	2006	
Year 12		2002	2003	2004	2005	2006		
Year 7 (Feb)	no.	11	17	11.2	14	17	15	
Year 10 (Aug)	no.	6	11	7	7	6	9	
Year 7 (Feb) - 10 (Aug)	%	54.5	64.7	62.5	50.0	35.3	60.0	
LSG median ²	%	71.2	71.5	70.1	68.4	70.0	70.0	
State median ²	%	73.4	72.9	71.9	71.4	71.6	71.6	
Year 10 (Aug)	no.	9						
Year 11 (Feb)	no.	0						
Year 10 (Aug) - 11 (Feb)	%	0.0						
LSG median ²	%	86.0	83.1	81.8	82.4	83.7	83.7	
State median ²	%	85.7	83.3	84.8	85.1	85.2	85.2	
Year 11 (Feb)	no.							
Year 12 (Aug)	no.							
Year 11 (Feb) - 12 (Aug)	%							
LSG median ²	%	69.1	67.6	66.0	66.5	66.5		
State median ²	%	73.6	73.4	72.2	72.8	72.8		
Year 7 (Feb)	no.							
Year 12 (Aug)	no.							
Year 7 (Feb) - 12 (Aug)	%							
LSG median ²	%	46.9	45.7	44.7	44.0	44.0		
State median ²	%	49.1	49.0	48.7	49.4	49.4		

Legend:

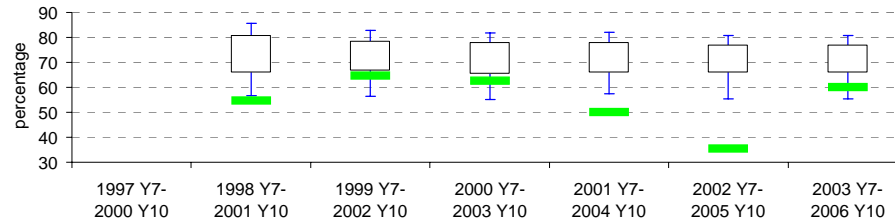
		LSG History ¹			
		Year	LSG	Year	LSG
State 90th percentile		2006	7	2003	7
		2005	7	2002	7
		2004	7	2001	7

Notes:

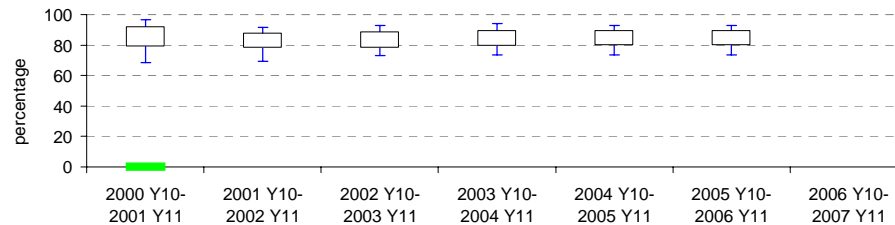
- The LSG of the school in the latter year (eg for Year 7 2001 to Year 12 2006, the LSG in 2006).
- 2006 benchmarks are not available at this stage. In the meantime, 2005 benchmarks are shown.

Real school retention rates plotted on state benchmarks²

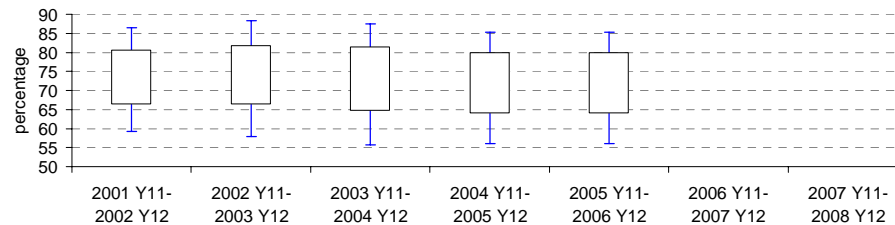
Year 7 (Feb) - 10 (Aug)



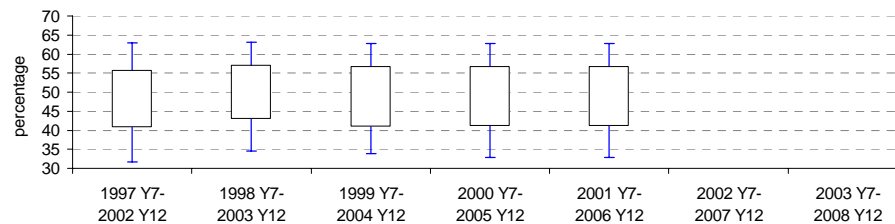
Year 10 (Aug) - 11 (Feb)



Year 11 (Feb) - 12 (Aug)



Year 7 (Feb) - 12 (Aug)



Exit Destination: Year 10

School no: 1712

School name: Pyramid Hill College

Explanation: The destination of students who left during or at the end of Year 10.

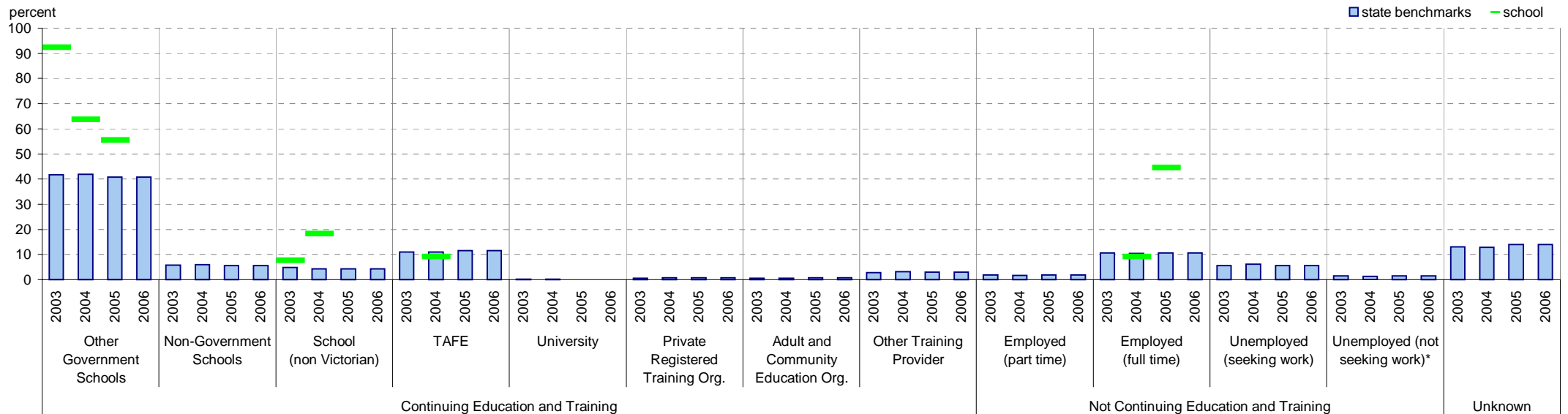
Source of data: Data retrieved electronically from CASES21 following February census.

Exit Destination	2003		2004		2005		2006		2005 state^
	n	%	n	%	n	%	n	%	%
Continuing education and training									
Other Government Schools (Victorian)	12	92.3	7	63.6	5	55.6			40.8
Non-Government Schools (Victorian)									5.6
School (non Victorian)	1	7.7	2	18.2					4.2
TAFE (Victorian)			1	9.1					11.6
TAFE (non Victorian)									0.1
University (Victorian)									0.1
University (non Victorian)									0.01
Private Registered Training Organisation									0.8
Adult and Community Education Organisation									0.8
Other Training Provider									3.0
SUBTOTAL	13	100.0	10	90.9	5	55.6			66.8
Not continuing education and training									
Employed (part time)									1.8
Employed (full time)			1	9.1	4	44.4			10.6
Unemployed (seeking work)									5.5
Unemployed (not seeking work)*									1.4
SUBTOTAL			1	9.1	4	44.4			19.3
Unknown									13.9
TOTAL	13	100.0	11	100.0	9	100.0			100.0
Total Yr 10 February enrolment	8		8		9				

Notes: ^ 2006 benchmarks are not available at this stage. In the meantime, 2005 benchmarks are shown.

* includes deceased students.

Exit destination of students who left during or at the end of Year 10, school vs state benchmarks^ (2003 to 2006)



Exit Destination: Year 11

School no: 1712

School name: Pyramid Hill College

Explanation: The destination of students who left during or at the end of Year 11.

Source of data: Data retrieved electronically from CASES21 following February census.

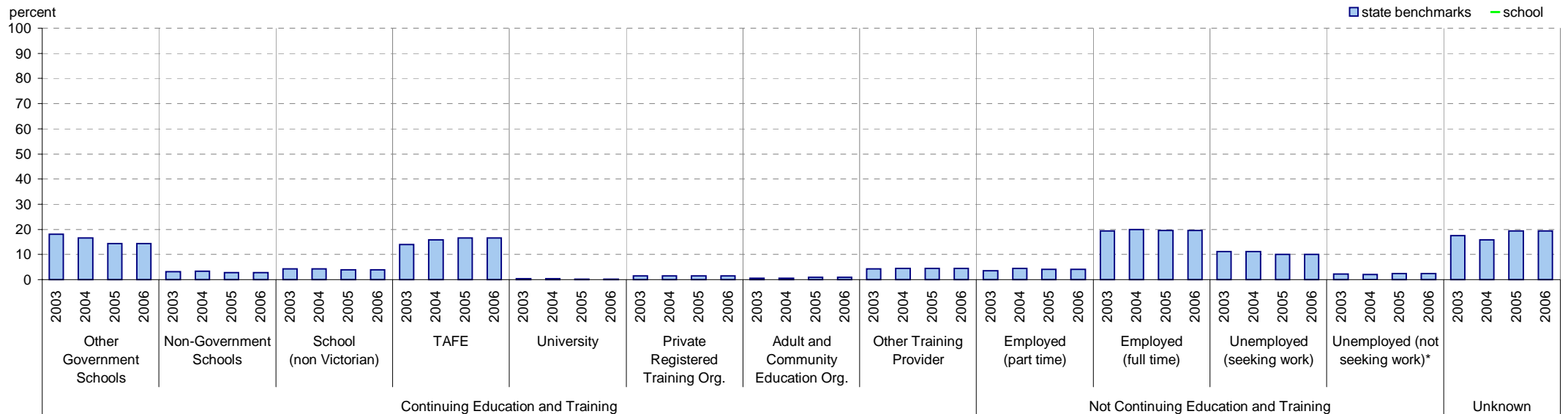
Exit Destination	2003		2004		2005		2006		2005 state^
	n	%	n	%	n	%	n	%	%
Continuing education and training									
Other Government Schools (Victorian)									14.3
Non-Government Schools (Victorian)									2.8
School (non Victorian)									3.9
TAFE (Victorian)									16.4
TAFE (non Victorian)									0.2
University (Victorian)									0.1
University (non Victorian)									0.06
Private Registered Training Organisation									1.4
Adult and Community Education Organisation									0.9
Other Training Provider									4.4
SUBTOTAL									44.4
Not continuing education and training									
Employed (part time)									4.2
Employed (full time)									19.6
Unemployed (seeking work)									10.0
Unemployed (not seeking work)*									2.5
SUBTOTAL									36.3
Unknown									19.4
TOTAL									100.0

Total Yr 11 February enrolment

Notes: ^ 2006 benchmarks are not available at this stage. In the meantime, 2005 benchmarks are shown.

* includes deceased students.

Exit destination of students who left during or at the end of Year 11, school vs state benchmarks^ (2003 to 2006)



Exit Destination: Students who left Year 12 before completing the year

School no: 1712

School name: Pyramid Hill College

Explanation: The destination of students who left prior to completing Year 12.

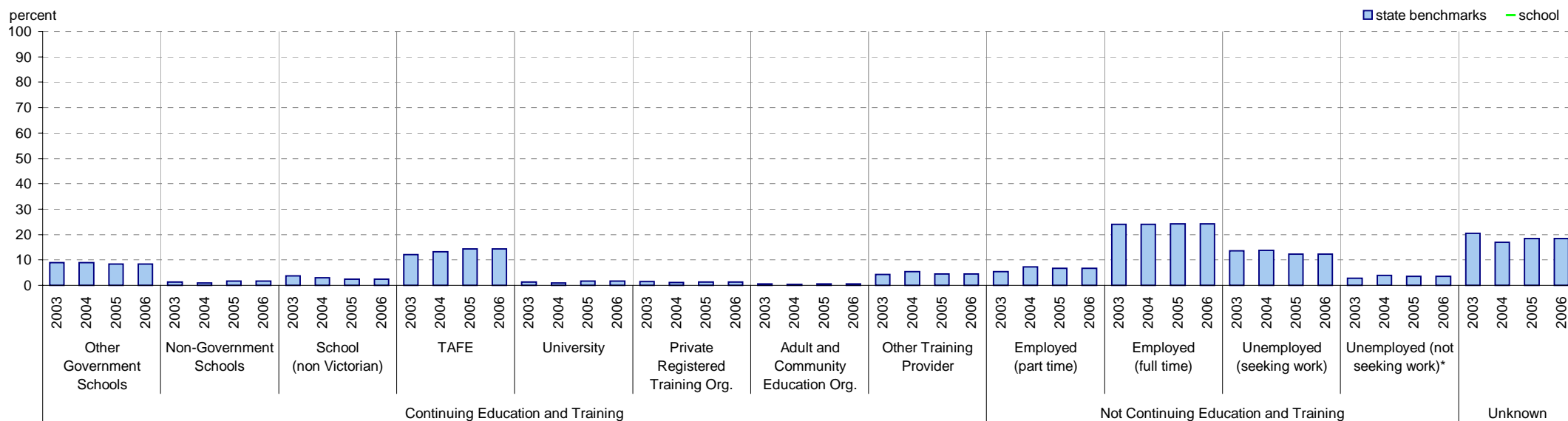
Source of data: Data retrieved electronically from CASES21 following February census.

Exit Destination	2003		2004		2005		2006		2005 state^
	n	%	n	%	n	%	n	%	%
Continuing education and training									
Other Government Schools (Victorian)									8.3
Non-Government Schools (Victorian)									1.7
School (non Victorian)									2.5
TAFE (Victorian)									14.2
TAFE (non Victorian)									0.0
University (Victorian)									1.2
University (non Victorian)									0.43
Private Registered Training Organisation									1.4
Adult and Community Education Organisation									0.7
Other Training Provider									4.5
SUBTOTAL									34.9
Not continuing education and training									
Employed (part time)									6.7
Employed (full time)									24.2
Unemployed (seeking work)									12.3
Unemployed (not seeking work)*									3.5
SUBTOTAL									46.7
Unknown									18.4
TOTAL									100.0

Total Yr 12 February enrolment

Notes: ^ 2006 benchmarks are not available at this stage. In the meantime, 2005 benchmarks are shown.
* includes deceased students.

Exit destination of students who left Year 12 before completing the year, school vs state benchmarks^ (2003 to 2006)



Exit Destination: Students who left at the end of Year 12

School no: 1712

School name: Pyramid Hill College

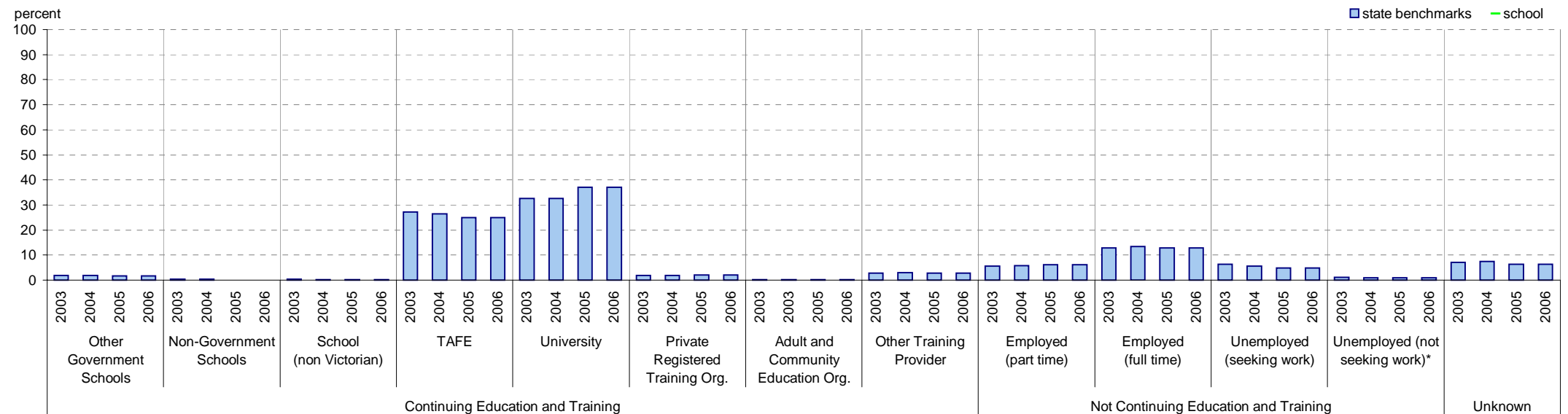
Explanation: The destination of students who left at the end of Year 12.

Source of data: Data retrieved electronically from CASES21 following February census.

Exit Destination	2003		2004		2005		2006		2005 state^
	n	%	n	%	n	%	n	%	%
Continuing education and training									
Other Government Schools (Victorian)									1.7
Non-Government Schools (Victorian)									0.1
School (non Victorian)									0.2
TAFE (Victorian)									24.8
TAFE (non Victorian)									0.2
University (Victorian)									35.9
University (non Victorian)									1.13
Private Registered Training Organisation									2.0
Adult and Community Education Organisation									0.1
Other Training Provider									2.8
SUBTOTAL									68.9
Not continuing education and training									
Employed (part time)									6.1
Employed (full time)									12.9
Unemployed (seeking work)									4.8
Unemployed (not seeking work)*									0.9
SUBTOTAL									24.7
Unknown									6.4
TOTAL									100.0

Total Yr 12 February enrolment

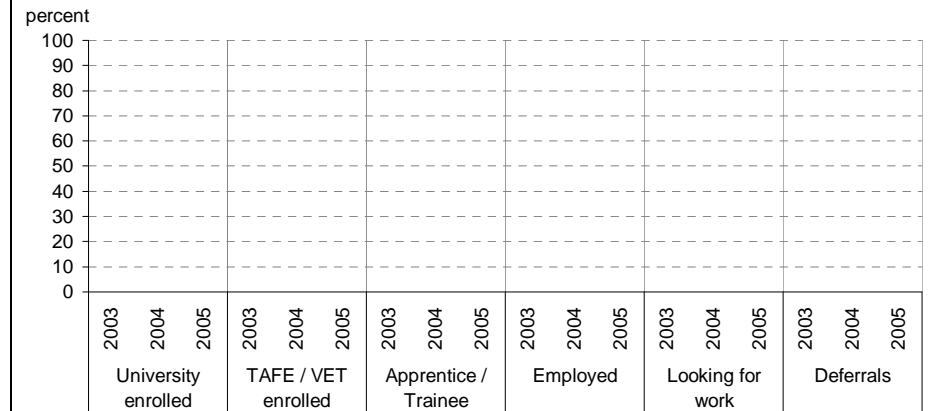
Exit destination of students who left at the end of Year 12, school vs state benchmarks^ (2003 to 2006)



On Track

Source of data: Data received from a telephone survey of Year 12 completers, conducted in April / May of the subsequent year.

Exit destination of students who left at the end of Year 12



Note: The exit destination data from On Track and CASES21 is not directly comparable for several reasons, one of which is the different bases. CASES21 data is based on all Year 12 completers, whereas On Track is based on Year 12 completers who responded to the survey. Hence the CASES21 data has an "unknown" category and the On Track data does not. Another reason is the slightly different categories, for example, On Track includes a "deferrals" category.

Notes: ^ 2006 benchmarks are not available at this stage. In the meantime, 2005 benchmarks are shown.
* includes deceased students.

Student Absence

NEW - Student Absence by FTE student

School no: 1712

School name: Pyramid Hill College

Source of data: Data retrieved electronically from CASES21 at time of rollover.

Explanation: The average (mean) number of absent days* per student. Up to 2006, the formula used to calculate the average number of absent days per student was based on student headcount. From 2006, the formula will be based on FTE** students. The new formula will provide a more accurate summary of student absence. For 2006, student absence will be provided for both student headcount and FTE student. Note that 20 absent days equates to 1 absent day per fortnight, and 10 absent days to 1 absent day per month.

Student Absence (by student headcount)

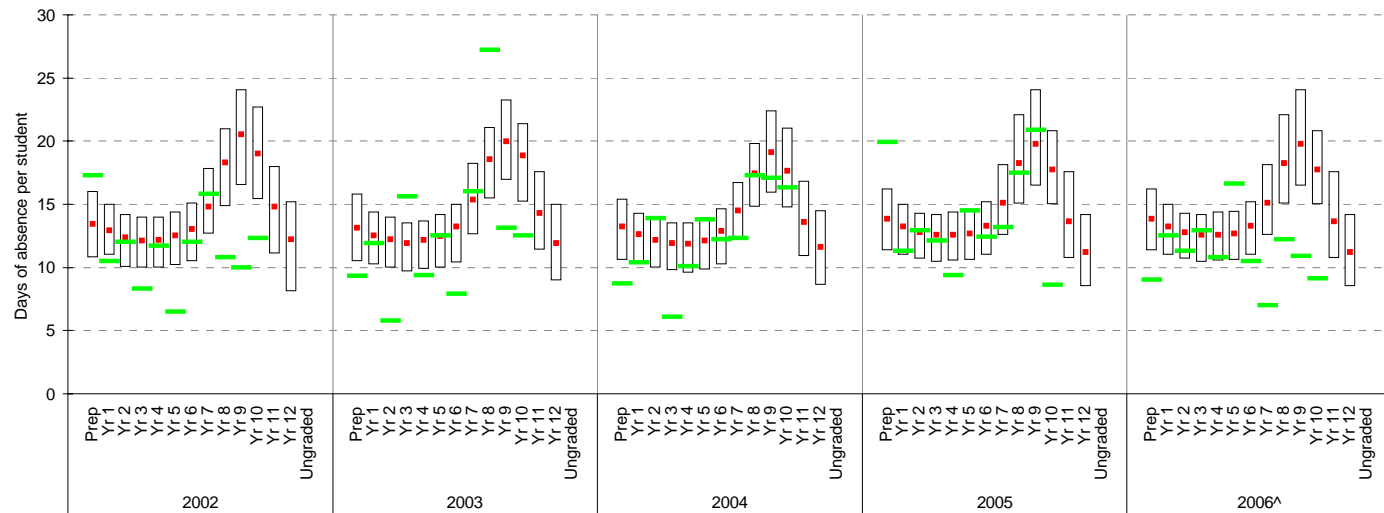
	School										2005 state benchmark^		
	2002		2003		2004		2005		2006		25th ptile	Mean	75th ptile
	Enrolments	Avg absent days / student	Enrolments	Avg absent days / student	Enrolments	Avg absent days / student	Enrolments	Avg absent days / student	Enrolments	Avg absent days / student			
Prep	17	17.3	14	9.3	9	8.7	16	19.9	11	9	11.4	13.9	16.2
Yr 1	11	10.5	18	11.9	18	10.4	9	11.3	14	12.5	11	13.3	15
Yr 2	12	12	12	5.8	18	13.9	17	12.9	10	11.3	10.7	12.8	14.3
Yr 3	12	8.3	12	15.6	12	6.1	18	12.1	18	12.9	10.5	12.6	14.2
Yr 4	14	11.7	13	9.4	10	10.1	14	9.4	21	10.8	10.5	12.6	14.4
Yr 5	15	6.5	12	12.5	19	13.8	11	14.5	9	16.6	10.6	12.7	14.4
Yr 6	15	12	16	7.9	10	12.2	19	12.4	12	10.5	11	13.3	15.2
Yr 7	17	15.8	17	16	17	12.3	13	13.2	14	7	12.6	15.1	18.1
Yr 8	14	10.8	13	27.2	12	17.3	15	17.5	11	12.2	15.1	18.3	22.1
Yr 9	9	10	12	13.1	10	17.1	14	20.9	17	10.9	16.5	19.7	24.1
Yr 10	12	12.3	10	12.5	11	16.3	9	8.6	10	9.1	15	17.7	20.8
Yr 11											10.7	13.6	17.6
Yr 12											8.5	11.2	14.2
Ungraded													
P-6 mean		11.4		10.3		11.2		13.3		11.8		13	
7-12 mean		12.6		17.5		15.4		15.8		9.8		16.2	

Student Absence (by FTE** student)

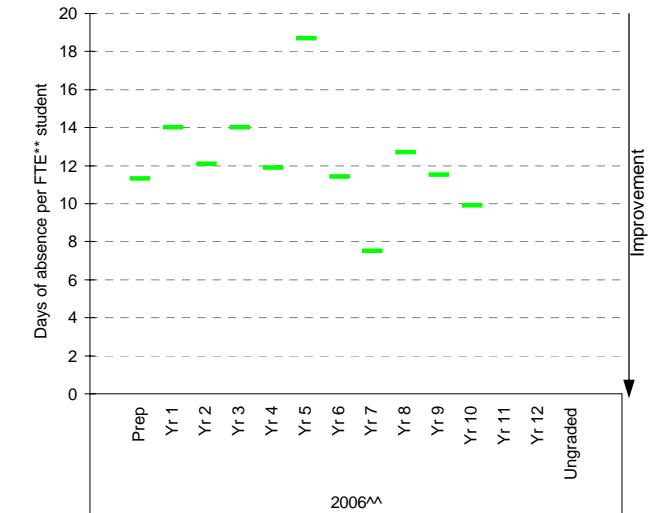
	School 2006		2006 state benchmark^^		
	Enrolments	Avg absent days / FTE** student	25th ptile	Mean	75th ptile
Prep	8.7	11.3			
Yr 1	12.4	14			
Yr 2	9.4	12.1			
Yr 3	16.6	14			
Yr 4	19.0	11.9			
Yr 5	8.0	18.7			
Yr 6	11.0	11.4			
Yr 7	13.1	7.5			
Yr 8	10.6	12.7			
Yr 9	16.0	11.5			
Yr 10	9.2	9.9			
Yr 11					
Yr 12					
Ungraded					
P-6 mean		13.2			
7-12 mean		10.4			

Legend:
■ State 75th percentile
■ State mean
■ School
■ State 25th percentile

Student absence (by student headcount), school plotted against state benchmarks^, 2002 to 2006



Student absence (by FTE** student), school plotted against state benchmarks^^, 2006



Notes: * Includes curriculum absences only (absence codes 200, 201, 202, 203, 205, 206, 207, 208, 209, 210, 211, 300, 401, 500, 700, 800, 804, 805, 900).

Notes: ** FTE = Full Time Equivalent (including part-time and part-year fractions).

^ 2006 benchmarks are not available at this stage. In the meantime, 2005 benchmarks are shown.

^^ 2006 benchmarks are not available at this stage.

Parent Opinion

School no: 1712

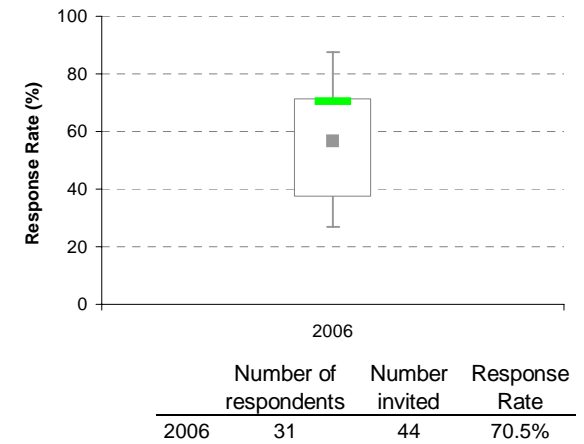
School name: Pyramid Hill College

Explanation: A self-completion questionnaire to obtain parents' opinions of the school. Parents rated a number of statements using a scale where 1=strongly disagree & 7=strongly agree. The statements were grouped into the following categories.

Source of data: Data scanned from questionnaires completed by parents.

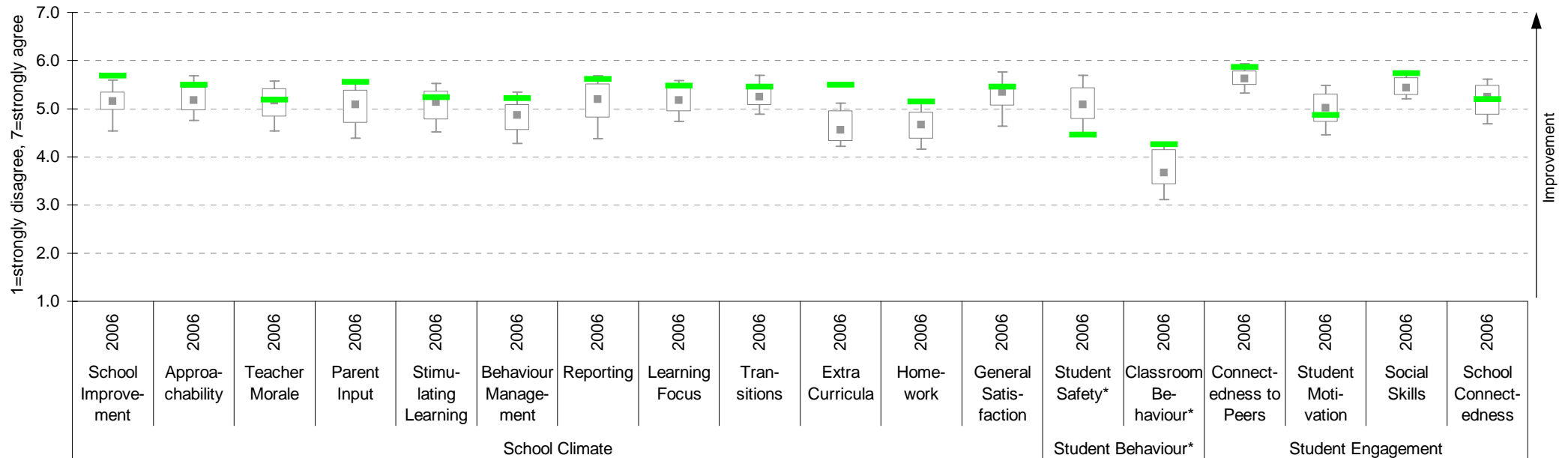
Variable	Year	School mean	State Pri/Sec median	Variable	Year	School mean	State Pri/Sec median
School Improvement	2006	5.69	5.16	Extra Curricula	2006	5.50	4.55
Approachability	2006	5.50	5.18	Homework	2006	5.15	4.67
Teacher Morale	2006	5.19	5.17	General Satisfaction	2006	5.45	5.34
Parent Input	2006	5.56	5.08	Student Safety*	2006	4.46	5.09
Stimulating Learning	2006	5.23	5.14	Classroom Behaviour*	2006	4.26	3.67
Behaviour Management	2006	5.22	4.86	Connectedness to Peers	2006	5.87	5.63
Reporting	2006	5.61	5.19	Student Motivation	2006	4.87	5.02
Learning Focus	2006	5.48	5.18	Social Skills	2006	5.73	5.44
Transitions	2006	5.46	5.25	School Connectedness	2006	5.20	5.24

School response rate against Pri/Sec school distribution



Legend:
 State 90th percentile
 State 75th percentile
 State Median
 State 25th percentile
 School
 State 10th percentile

Parent Opinion, school plotted on state Pri/Sec benchmarks 2006



Notes: ^ Benchmarks available for Primary, Secondary, Pri/Sec, Special and SDS schools.

* Parents' responses to all negatively phrased questions have been reversed for reporting purposes. Across all variables, the higher the score or percentile rank, the more positive parents' perceptions.

Staff Opinion

School no: 1712

School name: Pyramid Hill College

Explanation: A self-completion questionnaire to obtain the staff's opinions of the school. The survey was administered online using the School Organisational Health Questionnaire.

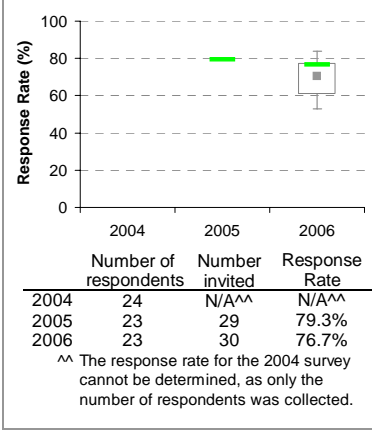
Source of data: Data transmitted from school staff to DoE via an online survey application.

Variable			School mean	State Pri/Sec median
No.	Name	Year		
1	Individual Morale	2004	75.6	66.0
		2005	72.8	65.0
		2006	73.9	65.7
2	School Morale	2004	64.2	61.2
		2005	66.5	62.2
		2006	63.3	60.6
3	Supportive Leadership	2004	84.8	66.8
		2005	79.3	67.7
		2006	68.5	64.3
4	Role Clarity	2004	79.9	69.1
		2005	74.7	67.4
		2006	73.4	68.1
5	Professional Interaction	2004	76.2	68.8
		2005	76.1	70.1
		2006	71.3	68.4
6	Participative Decision-Making	2004	71.3	61.5
		2005	69.8	59.9
		2006	67.4	58.4
7	Goal Congruence	2004	74.0	65.7
		2005	75.7	66.5
		2006	74.3	67.5

Variable			School mean	State Pri/Sec median
No.	Name	Year		
8	Appraisal & Recognition	2004	66.0	57.3
		2005	67.0	55.9
		2006	62.7	57.3
9	Professional Growth	2004	72.5	62.5
		2005	73.3	64.0
		2006	68.0	62.5
10	Curriculum Coordination	2004	62.5	57.2
		2005	66.5	58.2
		2006	65.3	57.2
11	Effective Discipline Policy	2004	76.0	57.9
		2005	74.6	59.8
		2006	72.6	60.1
12	Student Orientation	2004	83.8	72.6
		2005	82.8	73.0
		2006	80.6	72.9
13	Student Motivation	2004	69.2	57.0
		2005	68.2	57.9
		2006	71.1	57.8
14	Student Decision-Making	2004	66.9	56.0
		2005	70.9	55.1
		2006	65.8	57.4

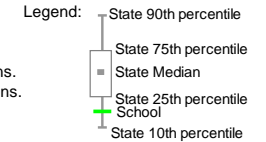
Variable			School mean	State Pri/Sec median
No.	Name	Year		
15	Learning Environment	2004	70.1	61.5
		2005	66.9	64.3
		2006	68.8	63.5
16	Student Misbehaviour	2004	26.9	41.3
		2005	26.0	38.1
		2006	31.5	39.7
17	Classroom Misbehaviour	2004	11.5	16.8
		2005	12.5	15.4
		2006	17.6	17.6
18	Excessive Work Demands	2004	30.7	51.5
		2005	30.4	52.7
		2006	50.5	52.8
19	Individual Distress	2004	17.1	32.7
		2005	16.7	30.8
		2006	26.8	30.5
20	School Distress	2004	26.5	44.1
		2005	23.3	41.5
		2006	31.7	43.1

School response rate* against Pri/Sec school distribution

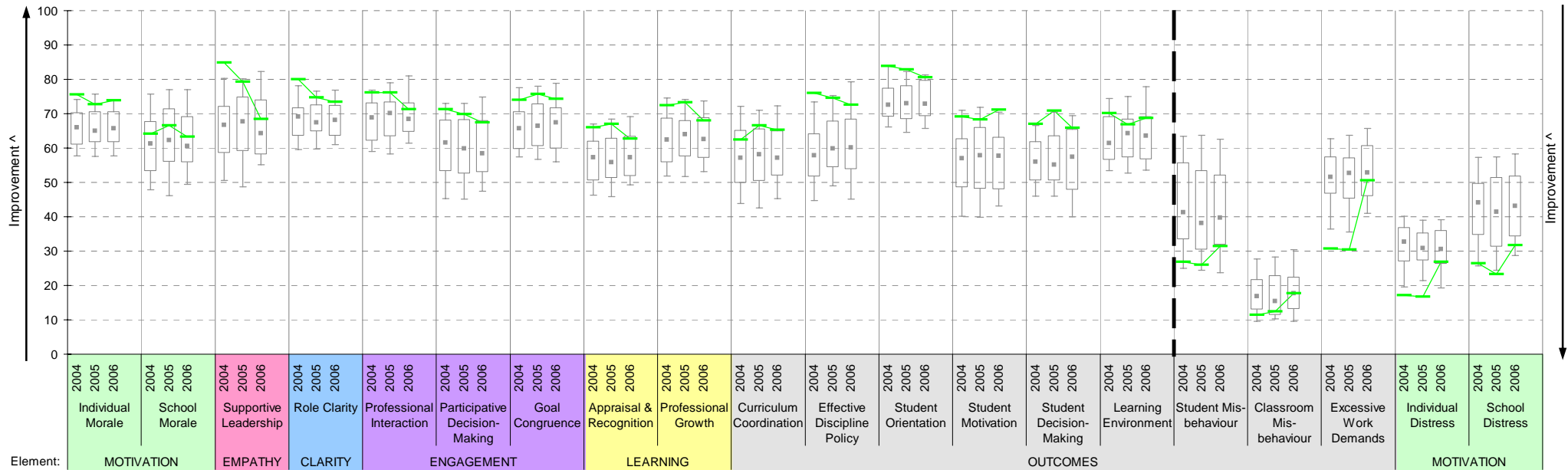


Notes:

- * If there were 6 or less respondents, table data is not shown for confidentiality reasons.
- ^ If there were 3 or less respondents, graph data is not shown for confidentiality reasons.
- ^ The higher the school mean, the more positive the outcome for variables 1 to 15.
- The lower the school mean, the more positive the outcome for variables 16 to 20.



Staff Opinion, school plotted on state Pri/Sec benchmarks 2004 to 2006



Staff Sick Leave

School no: 1712

School name: Pyramid Hill College

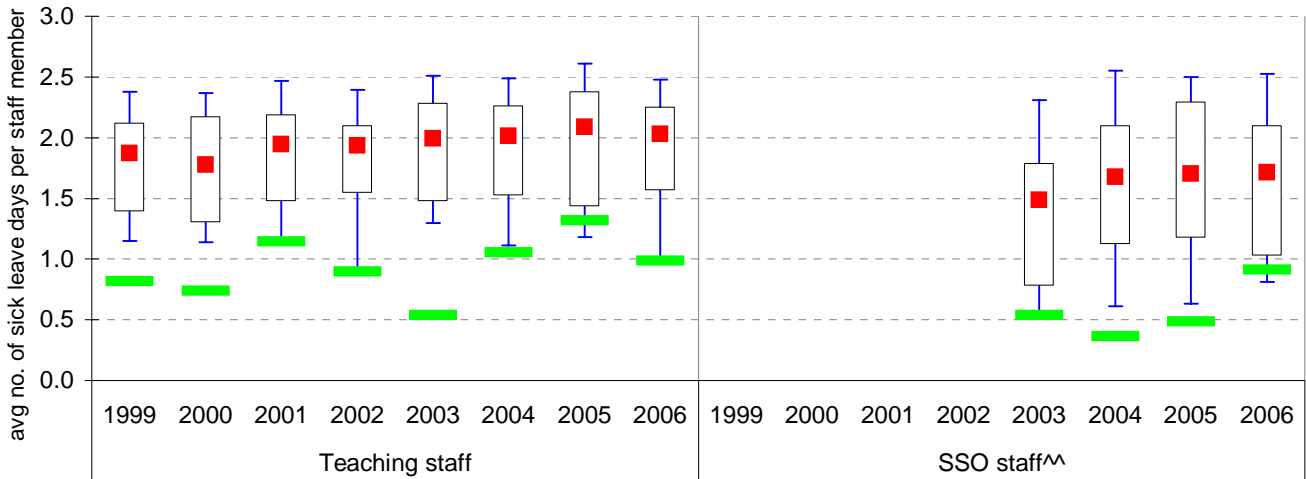
Explanation: The number of non-certificated and total sick leave days taken per staff member. A detailed explanation on how staff sick leave is calculated is provided in the Annual Reports Frequently Asked Questions page of the Standards website (<http://www.sofweb.vic.edu.au/standards/account/arepq.htm>).

Source of data: Human Resources Management System (HRMS)^.

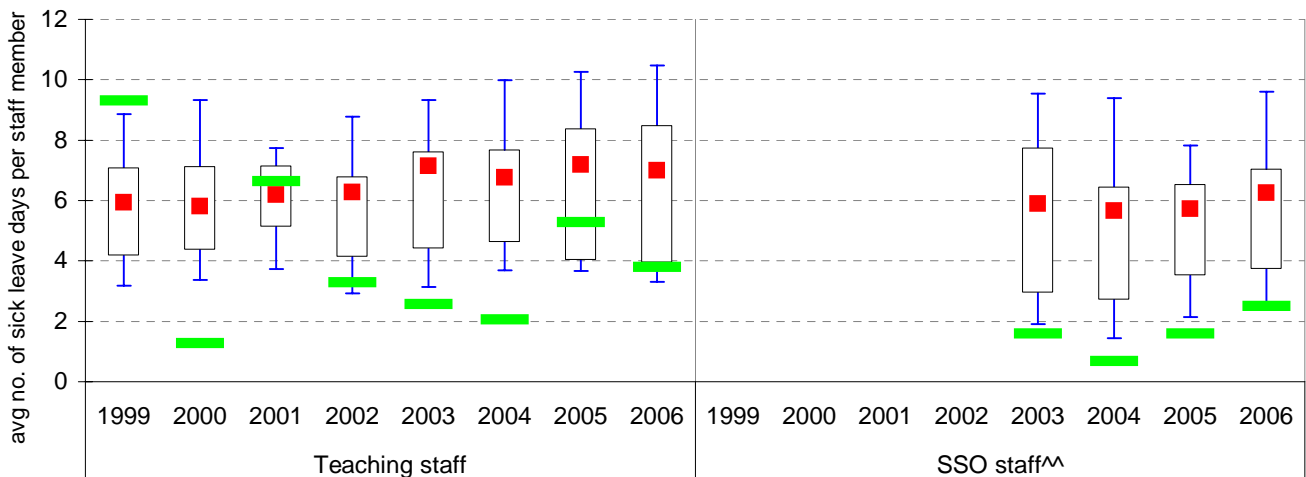
Staff Type	Non-Certificated sick leave days per staff member^								2006 bmark mean
	1999	2000	2001	2002	2003	2004	2005	2006	
Teacher	0.82	0.74	1.15	0.90	0.54	1.06	1.32	0.98	2.03
SSO^^					0.54	0.36	0.48	0.91	1.71

Staff Type	Total sick leave days per staff member^								2006 bmark mean
	1999	2000	2001	2002	2003	2004	2005	2006	
Teacher	9.30	1.26	6.63	3.28	2.56	2.05	5.28	3.80	6.99
SSO^^					1.59	0.67	1.59	2.51	6.26

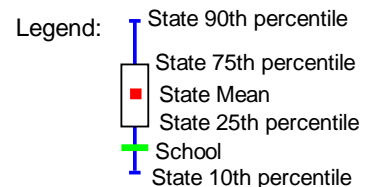
NON-CERTIFICATED sick leave, 1999 to 2006



TOTAL sick leave, 1999 to 2006



Note: ^ There may be some discrepancy between the results from CASES & those from HRMS. The latter are considered to be more accurate.
^^ Data for SSO (School Services Officer) staff is only available from 2003.



Teaching Staff Retention

School no: 1712

School name: Pyramid Hill College

Explanation: The retention rate of teaching staff is determined by matching staff payroll records for the last pay in June of one year (Year A), to the last pay in June of the following year (Year B).

Source of data: Human Resources Management System (HRMS).

Teaching Staff*

Year A	Year B	Number of Teaching Staff in Year A	Number of Teaching Staff retained in Year B	Teaching Staff Retention Rate	Statewide Average
2005	2006	21	19	90%	87%

Of the 21 teaching service staff at Pyramid Hill College at June 2005 (including those on leave without pay), 19 or 90% were still at the school at June 2006. This figure across all Government schools was 87%.

Ongoing Teaching Staff*^

Year A	Year B	Number of Ongoing Teaching Staff in Year A	Number of Ongoing Teaching Staff retained in Year B	Ongoing Teaching Staff Retention Rate	Statewide Average
2005	2006	15	13	87%	91%

Of the 15 ongoing teaching service staff at Pyramid Hill College at June 2005 (including those on leave without pay), 13 or 87% were still at the school at June 2006. This figure across all Government schools was 91%.

Note: * Teaching staff includes Principal class, Teacher class and Instructor class. Teaching staff employed as visiting teachers, guidance officers, curriculum consultants, etc. are excluded as they are not charged to a particular school.

^ Not including fixed term staff, except for where staff had changed from ongoing in Year A to fixed term in Year B.

Bank Balances

School no: 1712

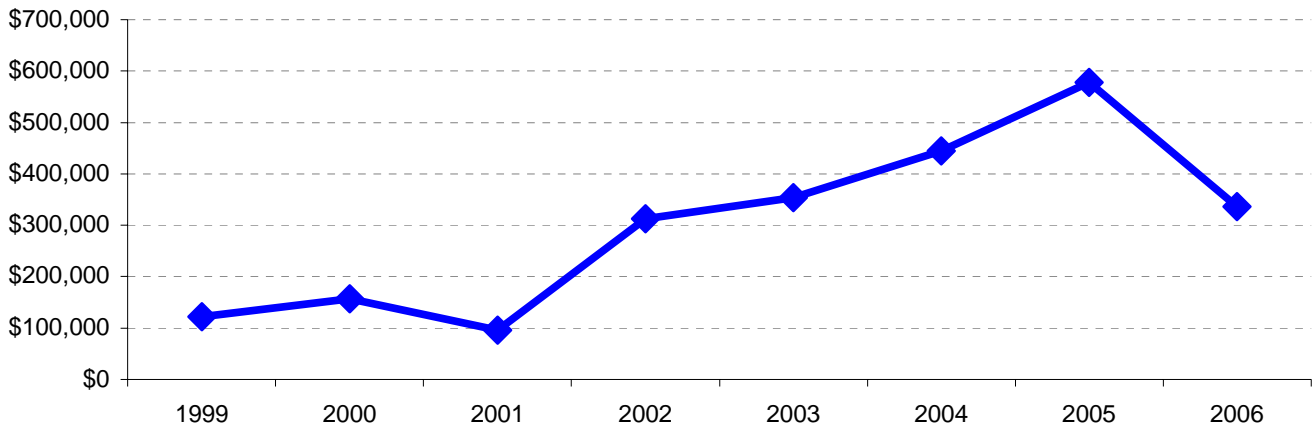
School name: Pyramid Hill College

Explanation: Account balance figures include official and investment accounts, and are calculated by taking the opening balance at 1st January plus the total receipts at 31st December less total payments at 31st December.

Account Balances (Official plus Investment Accounts)

1999	\$121,476	2003	\$353,817
2000	\$157,556	2004	\$445,187
2001	\$95,814	2005	\$577,450
2002	\$313,230	2006	\$336,685

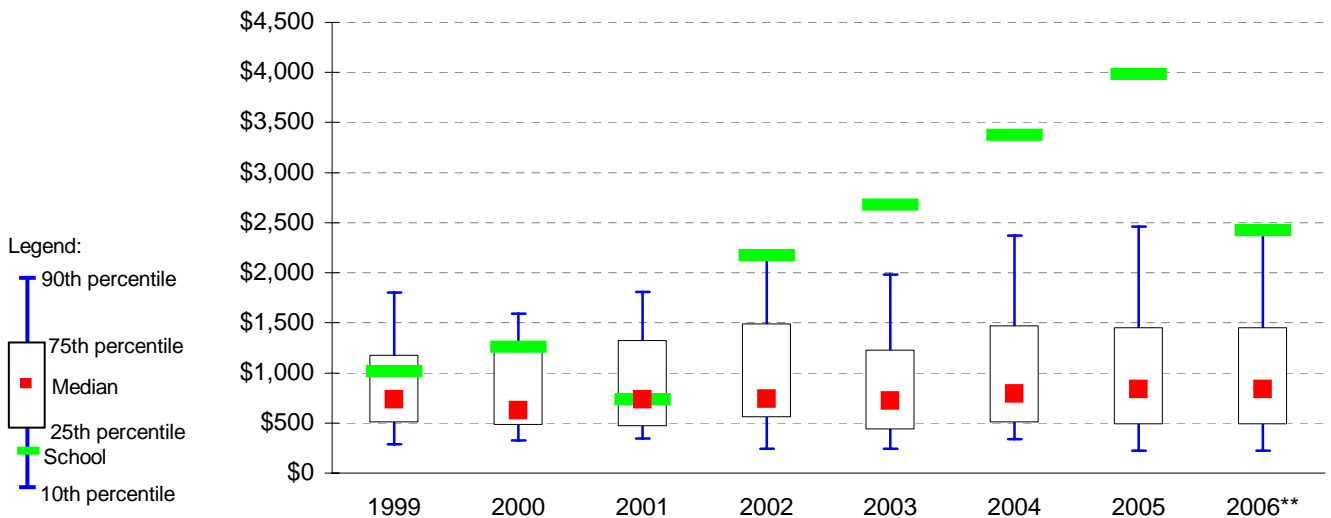
Account Balances, 1999 to 2006



Account Balances (Official plus Investment Accounts) per student[^]

1999	\$1,019	2003	\$2,680
2000	\$1,260	2004	\$3,373
2001	\$737	2005	\$3,982
2002	\$2,175	2006	\$2,422

School account balances per student enrolled in August census plotted on state Pri/Sec benchmarks*, 1999 to 2006



Notes:

[^] The account balance per student has been calculated to enable some comparison to be made between schools.

* Benchmarks for primary, secondary, pri/sec, SDS, special and language schools.

** 2006 benchmarks are not available at this stage. In the meantime, 2005 benchmarks are shown.